



ARCHON model Ex99 Explosion-Proof Light

Section
Bulletin
Issued
Page

2003
1001
01/08
001

FEATURES:

- *Relamp in place without disturbing the unit.
- *Individual compartments for the lamp and wiring.
- *Compact for Lighting and Viewing in one sight glass.
- *High Intensity Halogen Bulb - 100W.
- *Universal Mounting
- *Borosilicate Glass

Application:

The ARCHON model Ex99 is compact and will afford generous viewing of vessel contents using one sightglass for combined Lighting and Viewing.

You may also use the Universal Mounting feature for separate Lighting and Viewing when necessary.

The model Ex99 can be used on:

- Conventional Sightglasses
- Sanitary Sightglasses
- Sight Flow Indicators
- Rectangular and Obround Sightglasses
- Manways, Access Doors

RATING: UL 844 Listed

This fixture is suitable for use in the following locations as defined by the National Electrical Code:

| Class | Division | Groups |
|-------|----------|---------|
| 1 | 1 | C and D |
| 1 | 2 | C and D |

Temperature Code: T4A

This fixture is rated for Temperature Code T4A for maximum ambient temperature of 40 °C

Lamp / Electrical Data

Voltage/Wattage: 120 VAC only / 100 Watts
Lamp Type: Halogen Incandescent
Lamp No.: 100Q/CL/DC ESR



Sightglass Mounting:

Angle brackets allow for easy flange mounting to most sightglasses.

ARCHON sightglass models that allow for Lighting and Viewing:

| | |
|-------|----|
| KB200 | 9" |
| KB150 | 7" |
| KB125 | 6" |
| KB100 | 5" |

ARCHON sightglass models that allow for Lighting Only:

| | |
|-------|----|
| KB80 | 4" |
| KB50 | 3" |
| SS-TC | 4" |

Also mounts to Sight Flow Indicators sizes 2" and above.

The model Ex99 can easily mount to any manufacturer's sightglass that may be existing on a Tank or Vessel.



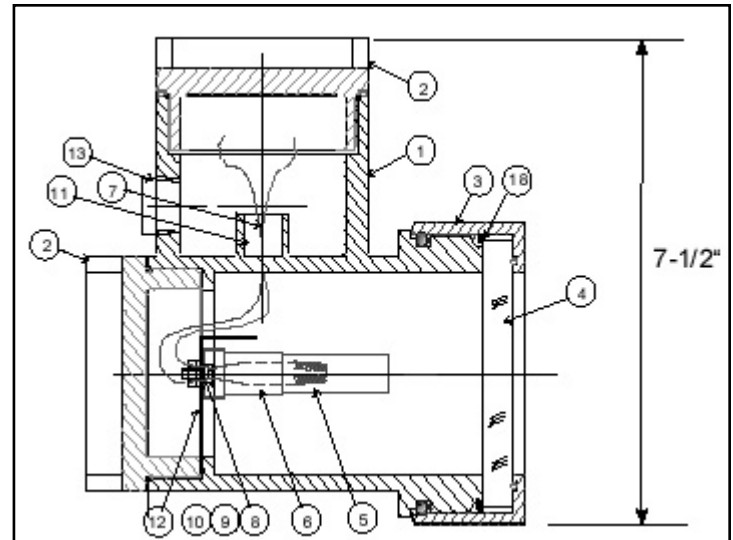
ARCHON model Ex99 Explosion-Proof Light

Section
Bulletin
Issued
Page

2003
1001
01/08
002

Dimensional Data and Parts List for the model Ex99 Explosion Proof Light:

Weight of Unit: 7lbs
Housing Material: Corrosion resistant cast aluminum
Mounting Brackets: Aluminum



| item | Qty | Description |
|------|-----|------------------|
| 1 | 1 | Body |
| 2 | 2 | Cover |
| 3 | 1 | Lens Cap |
| 4 | 1 | Lens Cap |
| 5 | 1 | Lamp |
| 6 | 1 | Lamp Holder |
| 7 | 1 | Wire Lead Seal |
| 8 | 2 | Screw |
| 9 | 2 | Washer |
| 10 | 2 | Hex Nut |
| 11 | 1 | Terminal Plug |
| 12 | 1 | Lampholder Plate |
| 13 | 3 | Conduit Plug |
| 14 | 2 | Support Bracket |
| 15 | 4 | Screw |
| 18 | 1 | Int'l Ret'g Ring |

HAZARDOUS LOCATIONS:

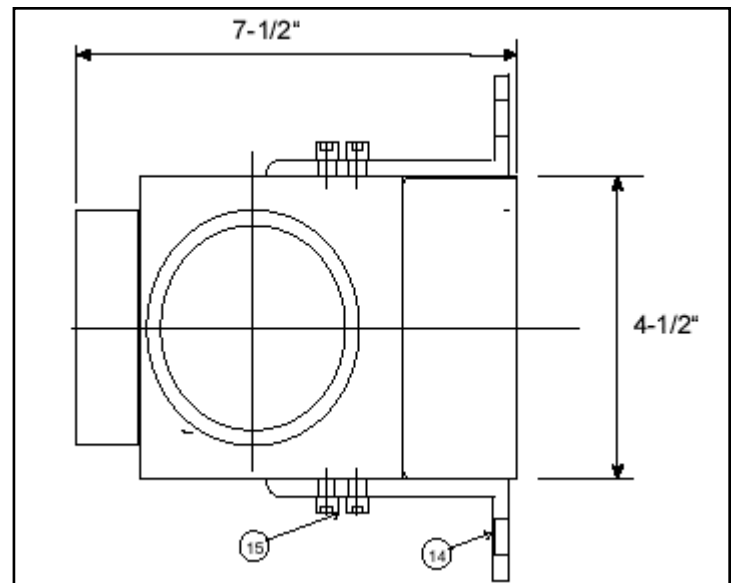
Class 1: Flammable gases or vapors

Division 1: Hazardous conditions present under normal operating conditions

Division 2: Hazardous conditions present only in case of abnormal or unusual operating conditions, such as failures of mechanical ventilation systems or ruptures of containers.

Group C: Atmospheres containing acetaldehyde, cyclopropane, diethyl ether, ethylene, isoprene, unsymmetrical dimethyl hydrazine (UDMH), etc.

Group D: Atmospheres containing acetone, acrylonitrile, ammonia, benzene, butane, 1butanol (butylalcohol) ethane, methane, methyl ethyl ketone, petroleum naphtha, octane, pentane, etc.



(800) 554-1394

www.ARCHONind.com

ARCHON Industries, Inc.

357 Spook Rock Road, Suffern NY 10901
www.ARCHONind.com

fax: (845) 368-3040

sales@ARCHONind.com