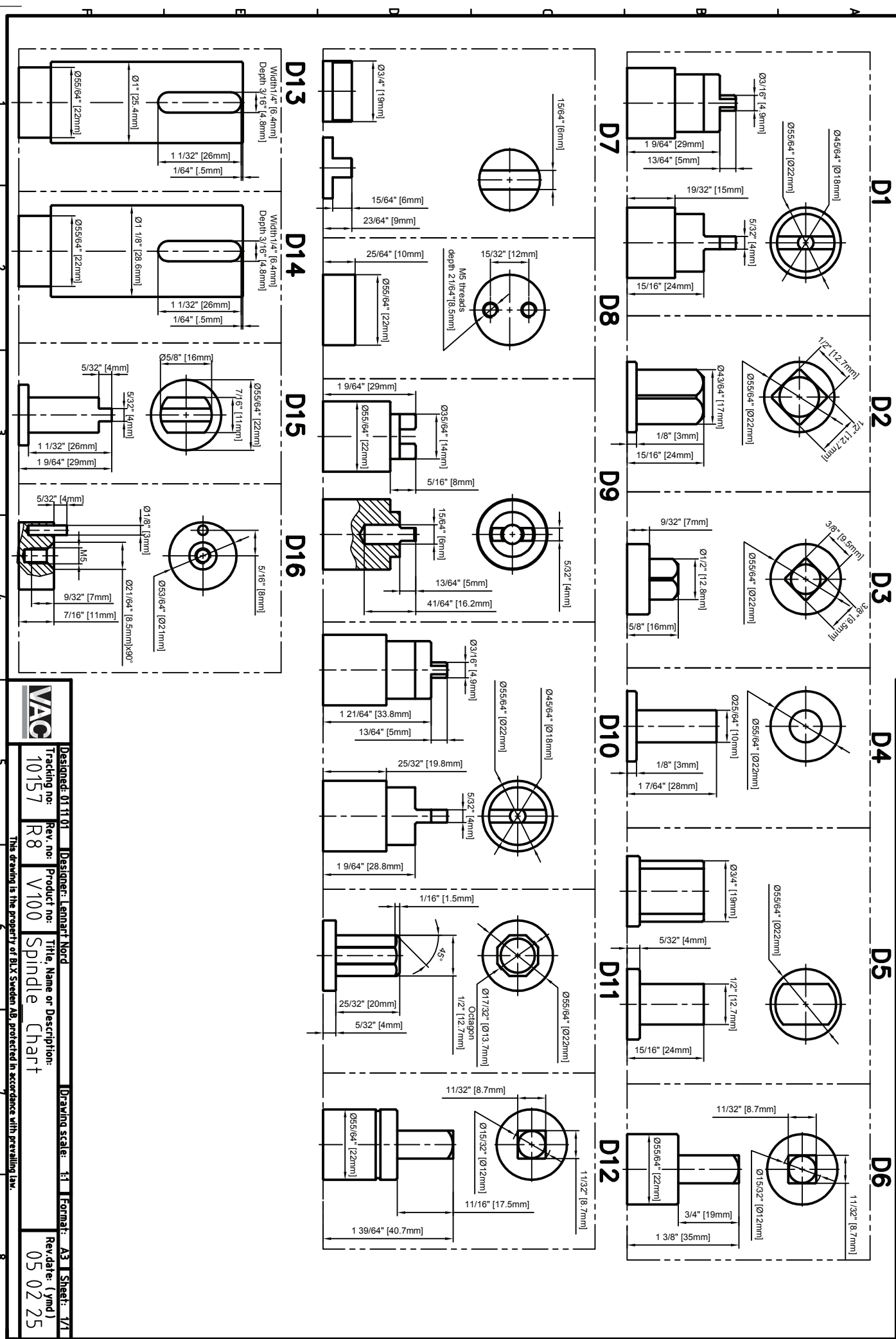


LN	Revision Note
1	Spindle D6 and D7 added. / Rev.2 : Spindle D8 added. / Rev.3: Spindle D9 added. / Rev.4: Spindle D1 modified: $\phi 18$ was $\phi 22$.
5	Spindle D10 and D11 added. Overall scale B was 2:1 / Rev.6: Spindle D12 added. / Rev.7: D13, D14 and D15 added.



VAO	Designed: D11.01	Designer: Lennart Nord	Drawing scale: 1:1	Format: A3	Sheet: 1/1
	Tracking no: 10157	Rev. no: R8	Product no: V100	Title, Name or Description: Spindle Chart	Rev.date: (ymd) 05 02 25
This drawing is the property of BIX Sweden AB, protected in accordance with prevailing law.					