

## Features

- High strength stainless steel construction
- No silicone oil, no internal o-rings, no welds
- Wide operating temperature range
- Ranges up to 10,000 psig
- Rugged design survives harsh environments
- Compatible with wide range of gases and liquids
- Suitable for high shock and vibration applications
- EMI/RFI Protection
- ABS (American Bureau of Shipping) Approved
- UL/cUL 508 Approved

## Specifications

| Performance @ 25 °C (77 °F) |                                      |
|-----------------------------|--------------------------------------|
| Accuracy <sup>1</sup>       | <±0.5% BFSL                          |
| Stability (1 year)          | ±0.25% FS, typ.                      |
| Proof Pressure              | 2X Rated Pressure                    |
| Burst Pressure              | 5X or 20,000 psig, whichever is less |
| Pressure Cycles             | > 100 Million                        |

<sup>1</sup> Accuracy includes: Non-linearity, Hysteresis, and Non-repeatability

| Physical Description  |                               |
|-----------------------|-------------------------------|
| Case                  | 304 stainless steel           |
| Electrical Connection | Refer to Ordering Information |
| Wetted Material       | Refer to Ordering Information |

| Environmental Data    |                                     |
|-----------------------|-------------------------------------|
| <b>Temperature</b>    |                                     |
| Operating             | -40 to 85 °C (-40 to 185 ° F)       |
| Storage               | -40 to 100 °C (-40 to 212 ° F)      |
| <b>Thermal Limits</b> |                                     |
| Compensated Range     | 0 to 55 °C (30 to 130 ° F)          |
| TC Zero               | <±1.5% of FS (<±3.0% for 0-25 psig) |
| TC Span               | <±1.5% of FS                        |
| <b>Other</b>          |                                     |
| Shock                 | 100G, 11msec, 1/2 sine              |
| Vibration             | 10 G peak, 20 to 2000 Hz            |
| Rating                | IP-66 (housing only)                |
| EMI/RFI Protection    | Yes                                 |



| Electrical Data     |                          |                    |                          |
|---------------------|--------------------------|--------------------|--------------------------|
| Output              | 4-20mA                   | 1-5VDC,<br>1-6VDC  | 0.5-4.5 V<br>ratiometric |
| Excitation          | 10-28VDC                 | 10-28VDC           | 5VDC, reg                |
| Output Impedance    | >10k Ohms                | <100 Ohms,<br>nom. | <100 Ohms,<br>nom.       |
| Current Consumption | 20mA, typ.               | <10mA              | <10mA                    |
| Bandwidth (-3dB):   | DC to 250 Hz             | DC to 1kHz         | DC to 1kHz               |
| Output Noise:       | -                        | <2mV RMS           | <2mV RMS                 |
| Zero Offset         | <±1% of FS               | <±1% of FS         | <±1% of FS               |
| Span Tolerance      | <±2.0% of FS             | <±1.5% of FS       | <±1.5% of FS             |
| Output Load         | 0-800 Ohms<br>@ 10-28VDC | 10k Ohms,<br>min.  | 10k Ohms,<br>min.        |
| Reverse Polarity    | Yes                      | Yes                | Yes                      |

| Pressure Ranges** |            |            |                     |
|-------------------|------------|------------|---------------------|
| Gauge psig        | Proof psig | Burst psig | Pressure Range Code |
| 0-25              | 50         | 250        | 00025               |
| 0-50              | 100        | 250        | 00050               |
| 0-100             | 200        | 500        | 00100               |
| 0-200             | 400        | 1,000      | 00200               |
| 0-500             | 1,000      | 2,500      | 00500               |
| 0-1,000           | 2,000      | 5,000      | 01000               |
| 0-2,500           | 5,000      | 12,500     | 02500               |
| 0-5,000           | 10,000     | 20,000     | 05000               |
| 0-7,500           | 15,000     | 20,000     | 07500               |
| 0-10,000          | 20,000     | 20,000     | 10000               |

\* Typical Ranges. All ranges between 0-25 psig and 0-10,000 psig are available. Please consult factory.

\*\* Vacuum calibration available. Please consult factory. Specifications are subject to change without notice.

### Ordering Information

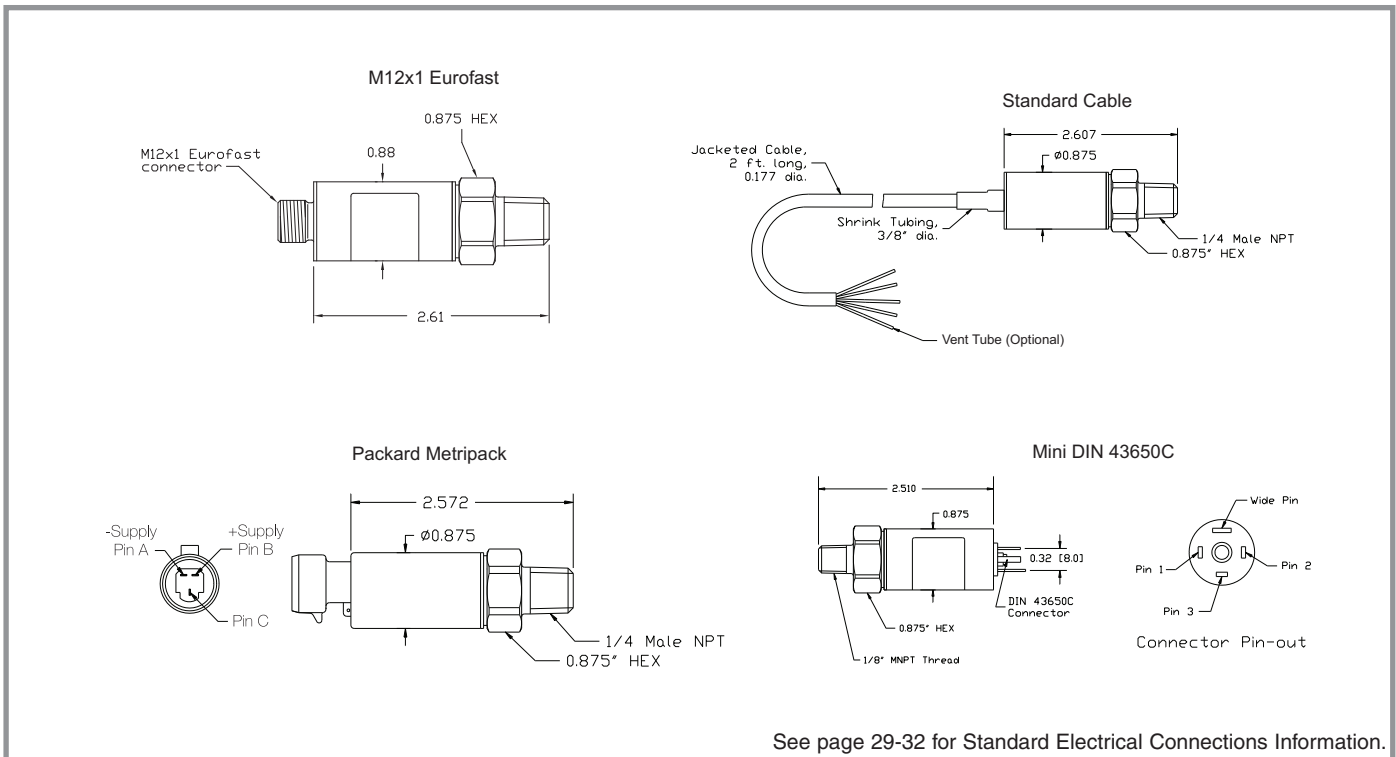
Construct a product code using the chart below. (Consult factory for other options)

**40-A-00500-P-4-B-0-000**

| Series Type    | Process Connection   | Pressure Range  | Pressure Unit  | Outputs+  | Electrical Interface  | Wetted Material  | Options   |
|----------------|--|---|--|---|---|--|---|
| 40<br>Standard | <b>X= Special</b><br><b>A= 1/4" MNPT</b><br><b>B= 1/8" MNPT **</b><br><b>C= 1/4" BSPP Male</b><br><b>E= 1/2" MNPT</b><br><b>F= 7/16" - 20 UNF Male **</b><br><b>H= 1/8" FNPT</b> | <b>XXXXX= Special</b><br>Insert pressure range code from pressure range chart.<br><b>Vacuum = V0000</b><br>-14.7psig/-1.01bar<br>For vacuum replace first zero with (V) in pressure code.<br>(Ex. V0500 = Vacuum to 500 psig) | <b>X= Special</b><br><b>B= BAR</b><br><b>K= kg/cm<sup>2</sup></b><br><b>P= psig</b><br><b>W= Inches of H<sub>2</sub>O column</b> | <b>X= Special</b><br><b>G= 1-10V</b><br><b>2= 0.5-4.5V ratiometric</b><br><b>3= 1-5V</b><br><b>4= 4-20mA 2 wire</b><br><b>6= 1-6V</b> | <b>X= Special</b><br><b>A= 2ft. cable</b><br><b>B= 4ft. cable</b><br><b>C= 6ft. cable</b><br><b>D= 10ft. cable</b><br><b>E= Mini DIN 43650C</b><br><b>F= Packard Metripack*** 150 3-Pin connector</b><br><b>I= Large DIN 43650A</b><br><b>J= 15ft. cable</b><br><b>T= 25ft. cable</b><br><b>Y= M12x1 Eurofast connector</b> | <b>X= Special</b><br><b>0= 17.4 PH</b><br><b>1= 316L</b><br><b>2= Inconel 718*</b> | <b>XXX= Special</b><br><b>000= No options</b><br><b>A10= ±0.10 accuracy</b><br><b>A25= ±0.25 accuracy</b><br><b>C01 Calibration 1-9</b><br><b>C10 Calibration 10-49</b><br><b>C50 Calibration 50-up</b><br><b>C0S Cleaned for O<sub>2</sub> service</b><br><b>117= Internal Restrictor Plug</b><br><b>165= Seal Gauge w/ internal restrictor plug</b> |

\*Consult factory on availability  
 \*\* Not available under 50PSI (1/8" NPT Male not available in 316L)  
 \*\*\* Not available for millivolt outputs  
 + Consult factory for millivolt options/outputs

### Dimensional Information



See page 29-32 for Standard Electrical Connections Information.