



DISPENSER SELECTION

Interface Dispenser

Interface Dispenser is designed to interface with Batching Panels or our Semi-Automatic Controllers AD-151, AC-154 and ATC.

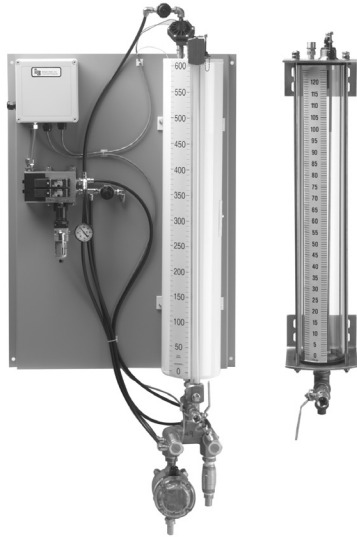


Figure 1: Interface dispenser with optional visual verification MEASURE RITE® site tube assembly

Manual Dispenser

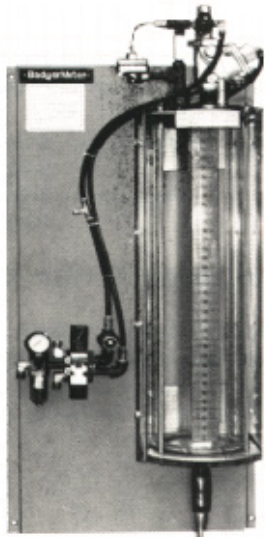


Figure 2: Manual dispenser, hand-operated only

Direct Feed Dispensers



Figure 3: Direct feed dispensers

Controllers



Figure 4: AC-151 controller



Figure 5: AC-154 controller

CONFIGURE COMPLETE DISPENSER SYSTEM

- NOTE:** Make your selection from each sub-assembly group. Completing each section, in order, will help the selection process.
1. Select the desired number, size and type of measuring units.
 2. Add the number of required pressure head assemblies.
 3. Select the required meter/valve assembly for each selected measuring unit.
 4. Select the required solenoid valve assembly.
 5. Select the required DP-10 Interface unit.
 6. Select a mounting backplate or enclosure for the number of units.
 7. Select the type and size of your liquid supply vessel.
 8. Select enclosure type.

Example

| | | |
|----------|-------------------------------------|---|
| 1 | Required | Three-unit dispenser system to mount inside batch house and interface into PSI batch panel. |
| 2 | Measuring Unit Assemblies | 120 ounce Acrylic 600 ounce Acrylic 600 ounce Acrylic |
| 3 | Pressure Head Assembly | Total of 3 required |
| 4 | Meter/Valve Assembly | Total of 3, size 3/4" |
| 5 | Solenoid Valve Assembly | Three-unit assembly |
| 6 | DP-10 Interface | Three-unit assembly |
| 7 | Liquid Supply Vessel | 1/2 air diaphragm pump assembly 1" air diaphragm pump assembly |
| 8 | Backplate or Steel Enclosure | Select Type—PVC or Painted Plywood |

PROPER SIZING AND SELECTION CHART

Proper sizing for visual verification.

- NOTE:** Proper sizing is very important if the unit is to meet your requirements.
- Know your minimum amount of admixture to be dosed.
 - Know your maximum amount of admixture to be dosed.

Example

| | |
|--|---------------------------------|
| Admixture | Water Reducer |
| Minimum dose based on 1 yard mix | = 25 ounces |
| Maximum dose based on 10 yard mix | = 250 ounces |
| Size of measuring required | 250 ounces × 120% = 300 ounces. |

Refer to Selection Chart below.

Direct Feed Dispenser Sizing

1. Determine flow rate requirements.
2. Total feet of head.
3. Weight per gallon. (Consult factory now.)

Selection Chart

| Acrylic | Stainless Steel | Stainless Steel ASME |
|------------|-----------------|----------------------|
| 30 ounce | 346 ounce | 130 ounce |
| 60 ounce | 597 ounce | 250 ounce |
| 120 ounce | 1131 ounce | 400 ounce |
| 240 ounce | 1475 ounce | 600 ounce |
| 350 ounce | 1895 ounce | 1130 ounce |
| 600 ounce | 3000 ounce | 1530 ounce |
| 950 ounce | | 1900 ounce |
| 1425 ounce | | 3800 ounce |
| 1900 ounce | | |

NOTE: All steel tanks are available in WHITE only. An optional visual verification MEASURE RITE® site tube assembly is available. Consult factory.

Direct Feed Dispensers On Hand (Other Options Available, Consult Factory)

- 1/4" air diaphragm pump
- 1/2" air diaphragm
- 1" air diaphragm
- Direct Feed Dispensers (Electric) starting from 1/4" in size. (Consult factory.)

COMPONENT SELECTION CHARTS

Measuring Unit Assemblies

| Qty. | Part Number | Description | |
|------|-------------|-------------|---------------|
| | | Ounces | Material |
| | 255091 | 30 | Acrylic |
| | 255093 | 55 | Acrylic |
| | 255102 | 120 | Acrylic |
| | 255103 | 240 | Acrylic |
| | 255104 | 350 | Acrylic |
| | 255105 | 600 | Acrylic |
| | 255106 | 950 | Acrylic |
| | 255108 | 1900 | Acrylic |
| | 255095-0002 | 346 | 304 SS White |
| | 255096-0002 | 597 | 304 SS White |
| | 255097-0002 | 1000 | 304 SS White |
| | 255098-0002 | 1475 | 304 SS White |
| | 255099-0002 | 1895 | 304 SS White |
| | 255165 | 3000 | 304 SS White |
| | 255300-0001 | 130 | ASME SS White |
| | 255301-0001 | 250 | ASME SS White |
| | 255302-0001 | 400 | ASME SS White |
| | 255303-0001 | 600 | ASME SS White |
| | 255304-0001 | 1130 | ASME SS White |
| | 255305-0001 | 1530 | ASME SS White |
| | 255306-0001 | 1900 | ASME SS White |
| | 255375-0001 | 3800 | ASME SS White |

Pressure Head Assemblies

| Qty. | Part Number | Description |
|------|-------------|-------------|
| | 253357 | Interface |
| | 253356 | Manual |

Requires 1 per measuring unit.

Standard Direct Feed Dispensers

| Qty. | Part Number | Description |
|------|-------------|----------------------|
| | 255012 | 1/4" diaphragm pump |
| | 255011 | 1/2" diaphragm pump |
| | 255013 | 1" diaphragm pump |
| | 255026-2222 | 1-1/2" pump/electric |

For special requirements, consult the factory.

Motor/Valve Assemblies

| Qty. | Part Number | Description |
|------|-------------|--|
| | 257007 | 30...600 oz, Interface Viton |
| | 257008 | 600 oz to 30 US Gallon, Interface Viton |
| | 257007-0001 | 30...600 oz, Interface Teflon |
| | 257008-0001 | 600 oz to 30 US Gallon, Interface Teflon |

Electrical Assemblies

| Qty. | Part Number | Description |
|------|-------------|----------------------|
| | 255107 | 1425 oz acrylic |
| | 255123 | Single product DP-10 |
| | 250627 | 2 product DP-10 |
| | 250620 | 3 product DP-10 |
| | 250617 | 4 product DP-10 |

If more than 4 products are required, consult the factory.

Solenoid/Valve Assemblies

| Qty. | Part Number | Description |
|------|-------------|-------------------------------|
| | 255146 | Single product valve assembly |
| | 255147 | 2 product valve assembly |
| | 255148 | 3 product valve assembly |
| | 255149 | 4 product valve assembly |

If more than 4 products are required, consult the factory.

Specify Type of Mount

| | |
|--|-----------------------------------|
| | Enclosure with window frame |
| | PVC backplate, type 1, 1/2" thick |
| | Plywood, painted white, 3/4" |
| | Steel, for single products only |

For special sizes, consult the factory.

Dispenser Options

| | | |
|--|-----|------------------------------------|
| | C/F | Top discharge interface dispenser |
| | C/F | Line empty interface dispenser |
| | C/F | Dual fill interface dispenser |
| | C/F | Dual discharge interface dispenser |

For special requirements, consult the factory.

Liquid Supply Options

| Qty. | Part Number | Description |
|------|-------------|----------------------------------|
| | 253024 | 1/2" air diaphragm pump assembly |
| | 253025 | 1" air diaphragm pump assembly |

Controller Options

| | | |
|--|-----|-----------------------|
| | C/F | Delay discharge (ATC) |
| | C/F | A/B switch (AC-154) |

Truck Mount Dispensers

| Qty. | Part Number | Description |
|------|-------------|---------------------------|
| | 253022 | 9 US gallon vertical |
| | 253674 | 9 US gallon horizontal |
| | 253022-0001 | 9 US gallon vertical ASME |

On-Site Direct Feed Dispenser

| Qty. | Part Number | Description |
|------|-------------|---|
| | 255029 | 1-1/2" pump/electric Dolly mounted with ATC controller |

ADMIXTURE DISPENSER CONFIGURATOR CHART

Configure complete dispenser system below:

| Bottle Sizes | Type | Color |
|---|-------|-------|
| Bottle #1 _____ | _____ | _____ |
| Bottle #2 _____ | _____ | _____ |
| Bottle #3 _____ | _____ | _____ |
| Bottle #4 _____ | _____ | _____ |
| Bottle #5 _____ | _____ | _____ |
| Type of Mount: _____ | | |
| PO#, if required: _____ | | |
| Ordered by: _____ | | |
| Please indicate any special instructions below: | | |
| _____ | | |
| _____ | | |
| _____ | | |

Configure your system below as you would have it laid out:

Control. Manage. Optimize.

MEASURE RITE is a registered trademark of Badger Meter, Inc. Other trademarks appearing in this document are the property of their respective entities. Due to continuous research, product improvements and enhancements, Badger Meter reserves the right to change product or system specifications without notice, except to the extent an outstanding contractual obligation exists. © 2014 Badger Meter, Inc. All rights reserved.

www.badgermeter.com