



ARCHON model AKG-F Sight Flow Indicator

Section
Bulletin
Issued
Page

2003
1001
01/08
022

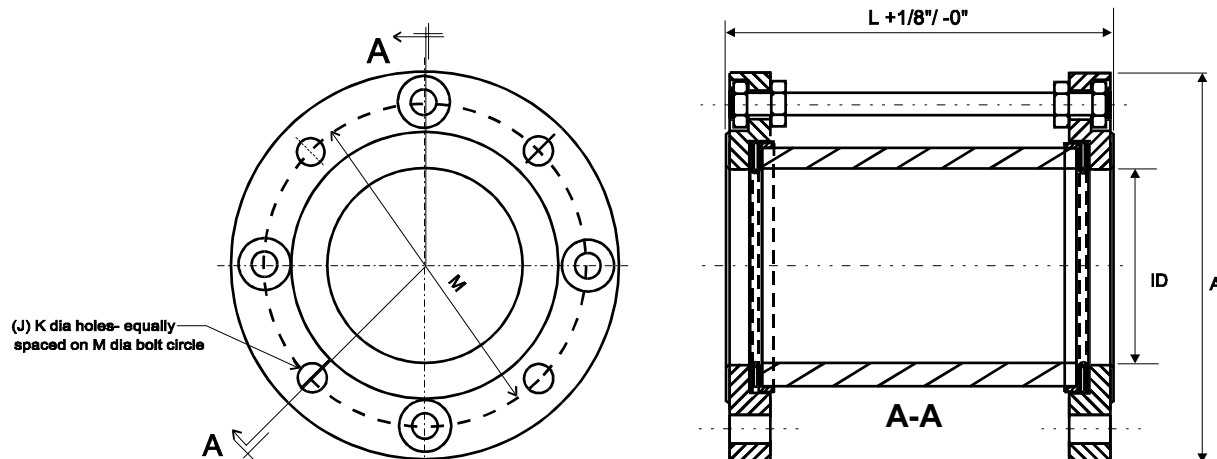
ARCHON model AKG-F

Full View ANSI Flange Sight Flow Indicator

The model AKG-F is a full view sight flow indicator providing 360° viewing of Process Media. This unit is designed for maximum visibility of system fluid as it travels through the glass or plastic cylinder. End connections are standard 150# ANSI. This unit is best suited for vertical applications but horizontal mounting is allowed when no mechanical force is exerted on the glass cylinder.

Features:

- Standard 150# ANSI Flange Connections
- Stainless Steel and Carbon Steel material is standard
- Standard cylinders are Heavy Wall Borosilicate Glass
- Available in varying lengths to 48".
- Graduated or clear cylinders are available
- Protective shields are available
- Drip tubes are an available option



Model No.	ANSI 150# RF Flange Size	Dimensions (in)			Maxm. Pressure (psig)
		L	A	ID	
AKG-F-0.5	1/2"	4	3-1/2	0.5	150
AKG-F-0.75	3/4"	4	3-7/8	0.75	150
AKG-F-1	1"	4	4-1/4	0.94	150
AKG-F-1.5	1-1/2"	4	5	1.38	120
AKG-F-2	2"	4-3/4	6	1.88	100
AKG-F-3	3"	5-3/8	7-1/2	2.84	100
AKG-F-4	4"	7-1/2	9	3.93	70
AKG-F-6	6"	10	11	6.12	45
AKG-F-8	8"	13-3/8	13-1/2	8.45	25
AKG-F-10	10"	14-1/8	16	9.13	20
AKG-F-12	12"	14-1/4	19	11.7	20