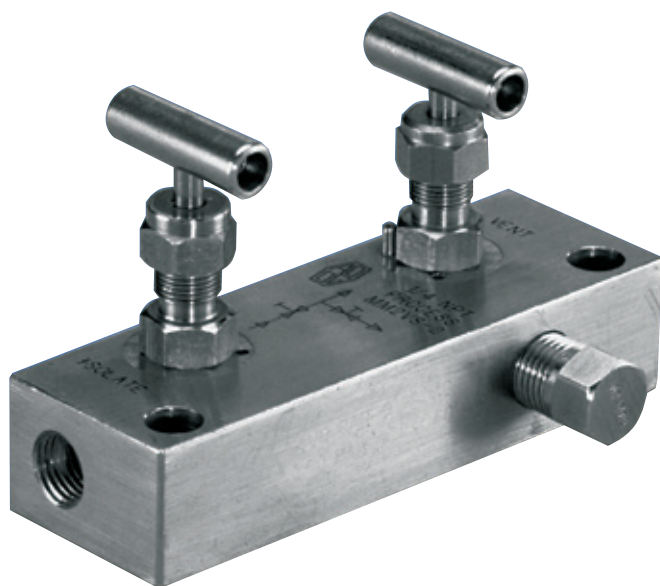


ANDERSON GREENWOOD MM2 STATIC PRESSURE MANIFOLD

Compact stainless steel block and bleed static pressure manifold incorporating mini-valve bonnets with an interchangeable hard or soft seat



FEATURES

- Remote mounting compact design requires minimum space for operation and installation.
- Reduced installation costs by manifolding the valves, eliminating several parts essential for 'piping-up.'
- Unique seat design enables conversion from metal to soft simply by fitting a soft seat and flow washer.
- Soft seats are field replaceable for easy maintenance, extending valve life.
- Rolled stem threads provide increased strength and smooth valve operation, extending valve life.
- Back seat stem prevents blowout under pressure or during operation.
- Threaded vent ports allow vent to be piped away safely. Supplied plugged as standard.
- All manifolds supplied with mounting holes as standard to enable surface or cabinet mounting.

GENERAL APPLICATION

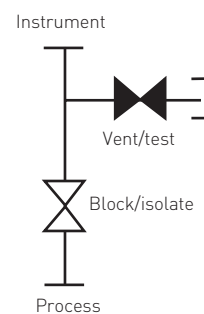
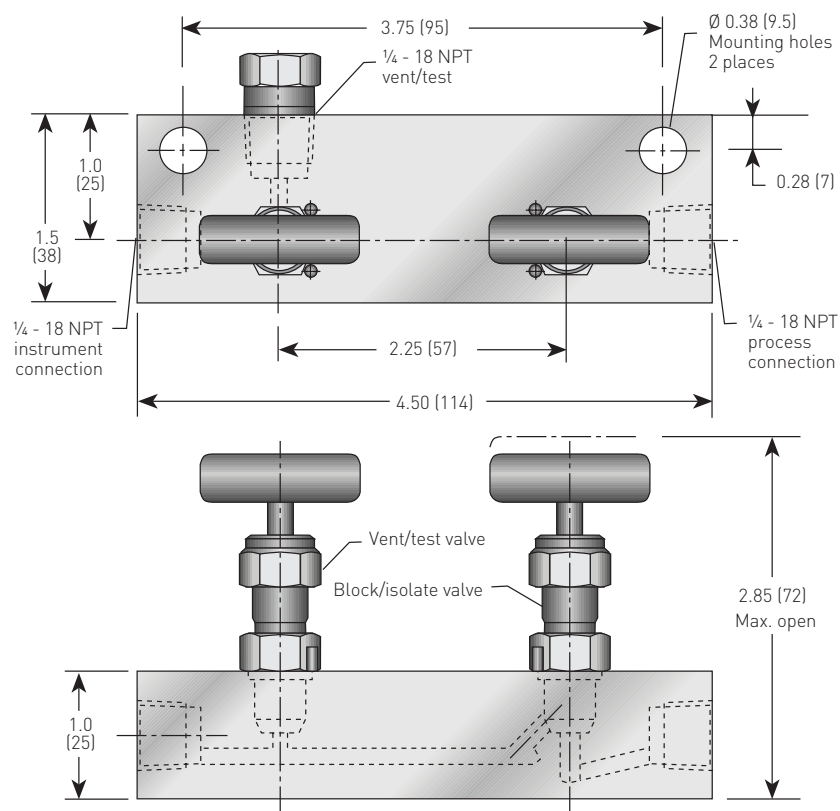
Suitable for use in compact instrument control loops for static pressure/gauge instruments; for mounting in control panels and for gas sampling equipment.

TECHNICAL DATA

Materials:	SS
Seats:	Metal or soft
Connections	
Instrument:	¼" NPT
Process:	¼" NPT
Pressure (max.):	6000 psig (414 barg)
Temperature (max.):	1000°F (538°C)

ANDERSON GREENWOOD MM2 STATIC PRESSURE MANIFOLD

DIMENSIONS, INCHES (mm) THREADED X THREADED



CONNECTIONS

Standard connections

Threaded ¼-inch NPT to ANSI/ASME B1-20-1.

NOTES

1. Approximate valve weight: 2.0 lb (.90 kg).
0.136-inch (3.5 mm) diameter orifice.
Valve C_v hard seat 0.25 maximum.
Valve C_v soft seat 0.24 maximum.
2. PCTFE (Polychlorotrifluoroethylene) is the exact equivalent of Kel-F®.
3. SG (Sour Gas) meets the requirements of NACE MR0175/ISO 15156 (for chloride conditions ≤ 50 mg/l (ppm)) and NACE MR0103-2005.
4. Threaded connection: vent supplied with blanking plug as standard.

STANDARD MATERIALS - METAL SEAT

Valve ^[1]	Body	Bonnet	Stem	Packing	Seat
SS	316 SS	316 SS	316 SS	PTFE, FKM O-ring or Grafoil®	Integral
SG ³	316 SS	316 SS	Monel® 400	PTFE	Integral

STANDARD MATERIALS - SOFT SEAT

Valve ^[1]	Body	Bonnet	Stem	Packing	Flow washer	Seat
SS	316 SS	316 SS	316 SS	PTFE or FKM O-ring	316 SS	PCTFE ^[2]

BONNET ASSEMBLY

The MM2 features the mini-valve bonnet assembly with a compact design and a one-piece rotating stem which is 'V' tipped with a shoulder for use as a metal or soft seated valve. The stem threads are rolled and lubricated to prevent galling and reduce operating torque.

The mini-valve bonnet comes in three designs:

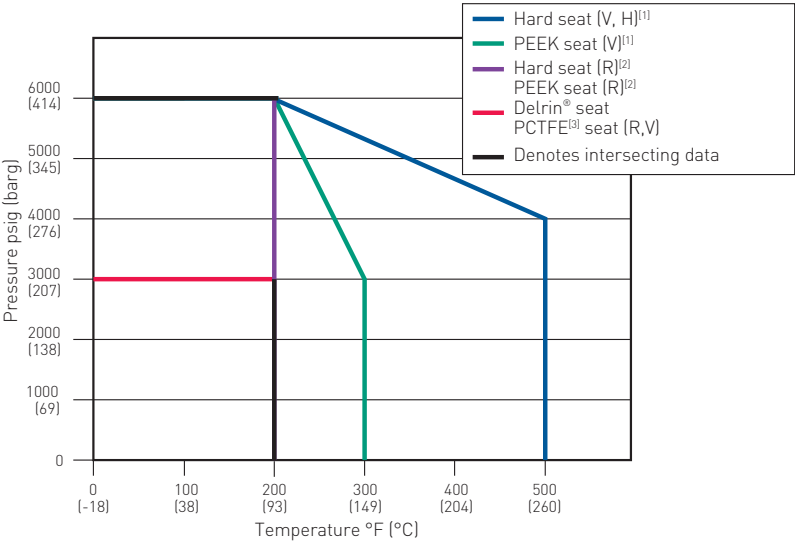
- An adjustable PTFE stem packed bonnet which is suitable for panel mounting via external bonnet threads.
- O-ring bonnet assemblies which use a FKM O-ring seal below the stem thread.
- A graphite-packed bonnet suitable for temperatures of up to 1000° F (538° C) which is available for SS valves only.

SOFT SEAT

All miniature manifolds and valves feature a unique valve seat which may be converted from metal to soft simply by fitting a soft seat and flow washer. SS valves use PCTFE² soft seat as standard. Delrin® and PEEK seats are also available.

ANDERSON GREENWOOD MM2 STATIC PRESSURE MANIFOLD

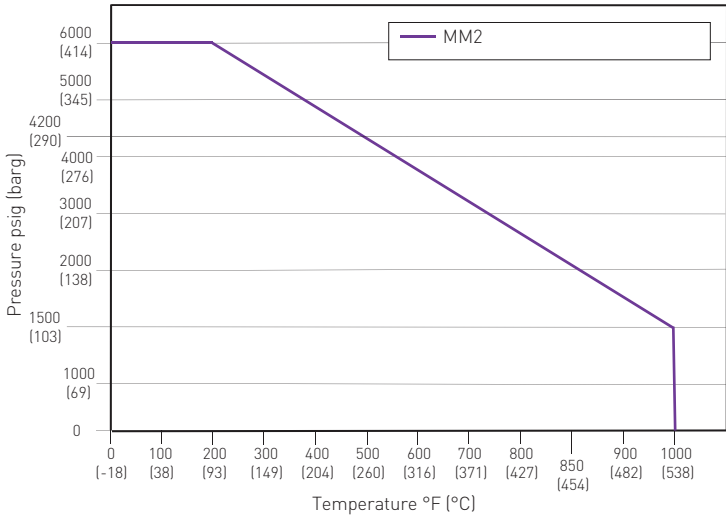
PRESSURE VS. TEMPERATURE - SS valves



NOTES

- 1. (V or H) = with PTFE or GRAFOIL[®] bonnet assemblies.
- 2. (R) = with O-ring bonnet assembly.
- 3. PCTFE (Polychlorotrifluoroethylene) is the exact equivalent of Kel-F[®].

PRESSURE VS TEMPERATURE - SS valves with Grafoil[®] bonnet



PRESSURE AND TEMPERATURE RATINGS

Valve	PTFE packed	Grafoil [®] packed
Hard seat	6000 psig at 200°F	6000 psig at 200°F
	(414 barg at 93°C)	(414 barg at 93°C)
	4000 psig at 500°F	1500 psig at 1000°F
	(276 barg at 260°C)	(103 barg at 538°C)
Delrin [®] /PCTFE	3000 psig at 200°F	
	(207 barg at 93°C)	
PEEK	6000 psig at 200°F	
	(414 barg at 93°C)	
	3000 psig at 300°F	
	(207 barg at 149°C)	

ANDERSON GREENWOOD MM2 STATIC PRESSURE MANIFOLD

SELECTION GUIDE

Example:	MM2	V	D	S	-2	-SG
Bonnet packing						
V PTFE						
R O-ring bonnet						
H GRAFOIL® (1000°F [538°C] max)						
Seat						
I Integral (body material)						
D Delrin®						
K PCTFE (Polychlorotrifluoroethylene) is the exact equivalent of Kel-F®						
E PEEK						
Body material						
S SS, 316						
Connection						
2 1/4-inch FNPT						
Options						
BSP Tr BSP taper thread						
SG Sour Gas meets the requirements of NACE MR0175/ISO 15156 (for chloride conditions ≤ 50 mg/l (ppm)) and NACE MR0103-2005						
OC00 Cleaned for oxygen service						
PHB Phenolic black handle						
PHG Phenolic green handle						
PHR Phenolic red handle						
PM Panel mount (PTFE packed only)						

NOTES

Monel® is a registered trademark of the Special Metals Corporation.

Delrin® is a registered trademark of E.I. du Pont de Nemours and Company.

Grafoil® is a registered trademark of GrafTech International.

Neither Emerson, Emerson Automation Solutions, nor any of their affiliated entities assumes responsibility for the selection, use or maintenance of any product. Responsibility for proper selection, use, and maintenance of any product remains solely with the purchaser and end user.

Anderson Greenwood is a mark owned by one of the companies in the Emerson Automation Solutions business unit of Emerson Electric Co. Emerson Automation Solutions, Emerson and the Emerson logo are trademarks and service marks of Emerson Electric Co. All other marks are the property of their respective owners.

The contents of this publication are presented for informational purposes only, and while every effort has been made to ensure their accuracy, they are not to be construed as warranties or guarantees, express or implied, regarding the products or services described herein or their use or applicability. All sales are governed by our terms and conditions, which are available upon request. We reserve the right to modify or improve the designs or specifications of such products at any time without notice.