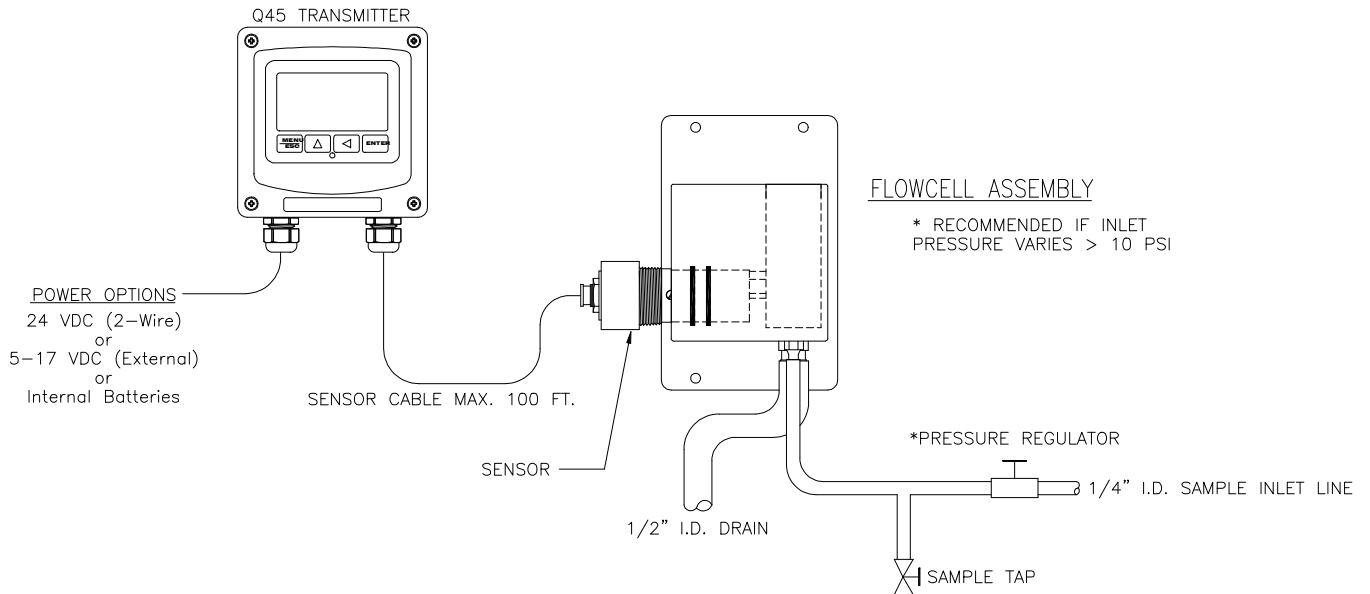
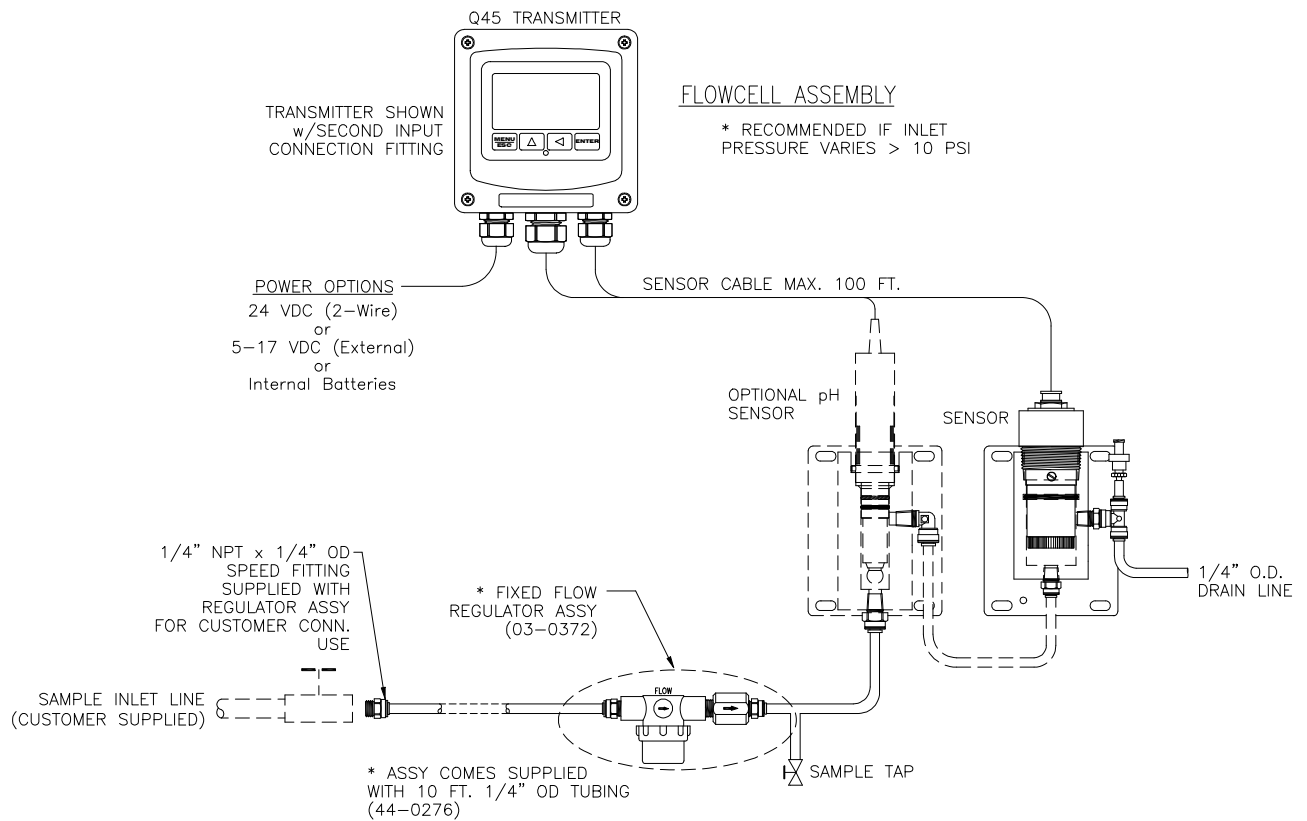


**SYSTEM WITH CONSTANT HEAD FLOWCELL**



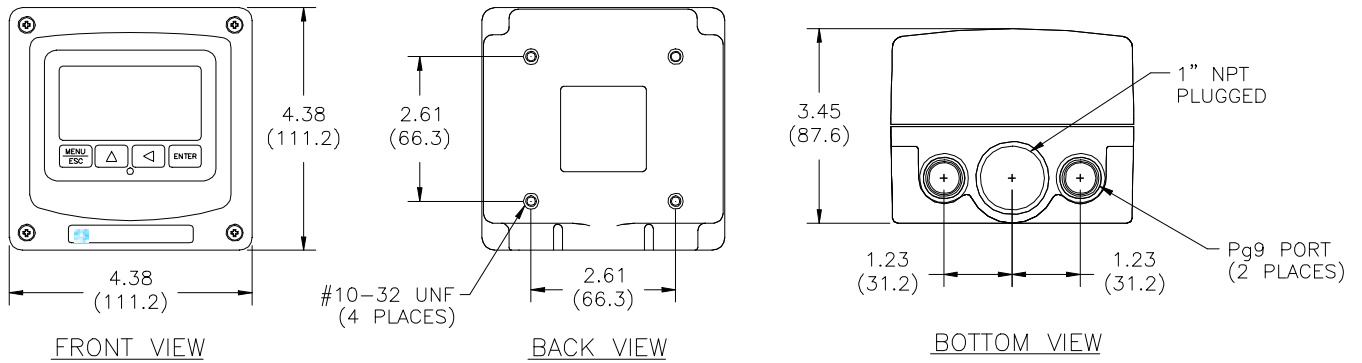
ATI-0730

**SYSTEM WITH SEALED FLOWCELL**



ATI-0891

**2-WIRE VERSION or REMOTE DC MODELS**

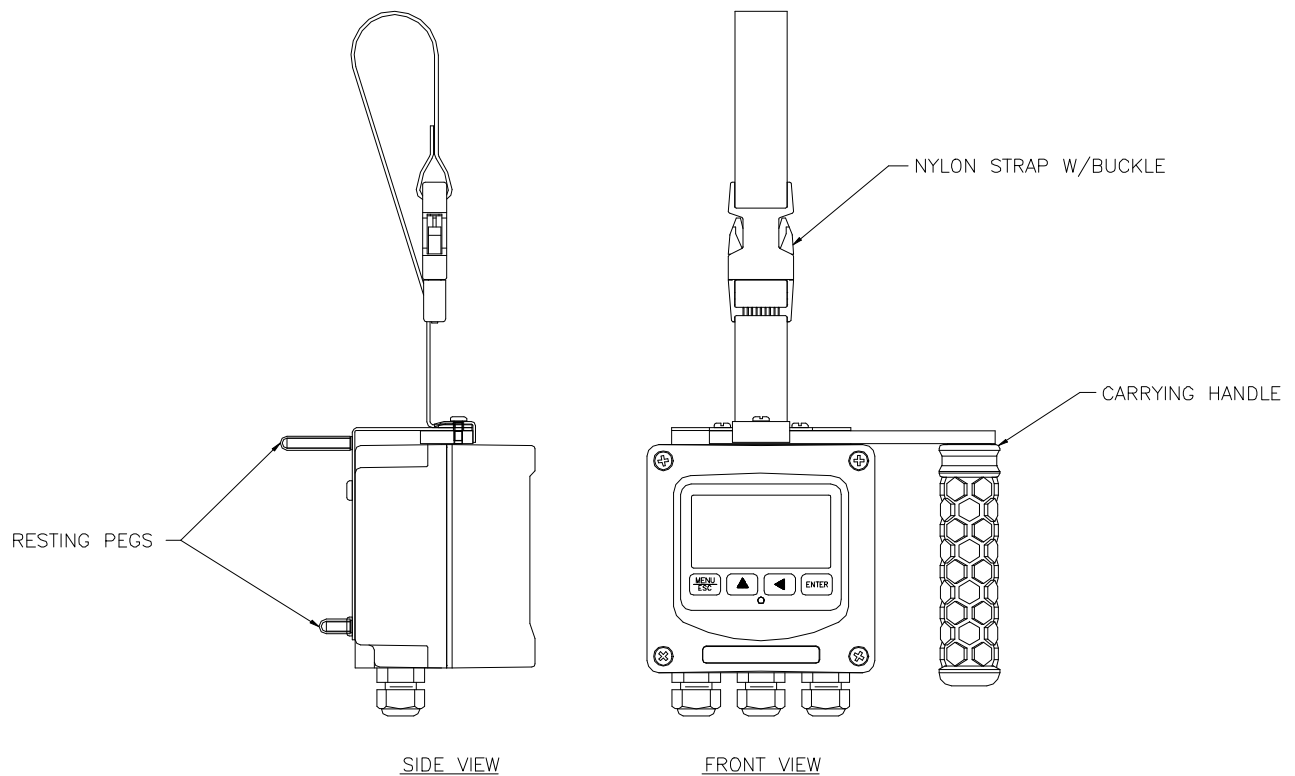


ATI-0655

**NOTE: JUNCTION BOXES HAVE SAME DIMENSIONS AS 2-WIRE TRANSMITTER**

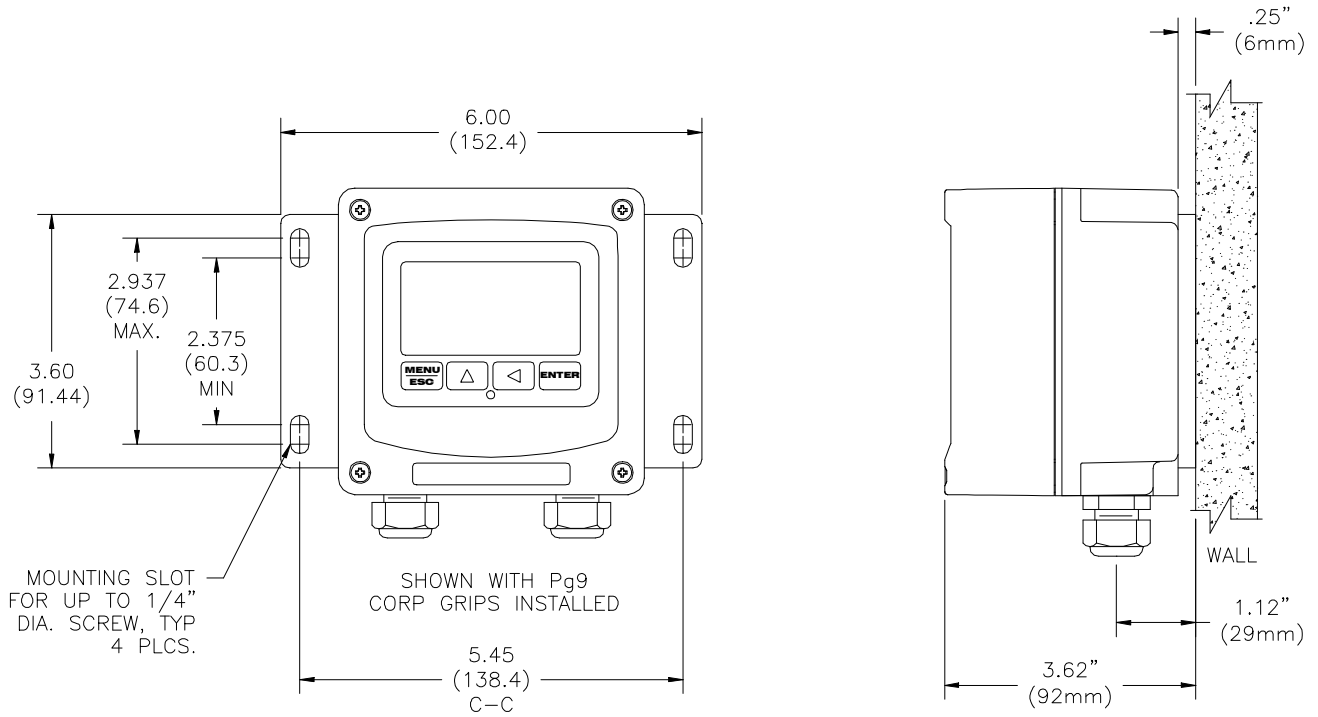
Material: Polycarbonate  
 Ratings: Nema 4X (IP-66)  
 V-0 Fire Retardant

**BATTERY POWERED MODEL**



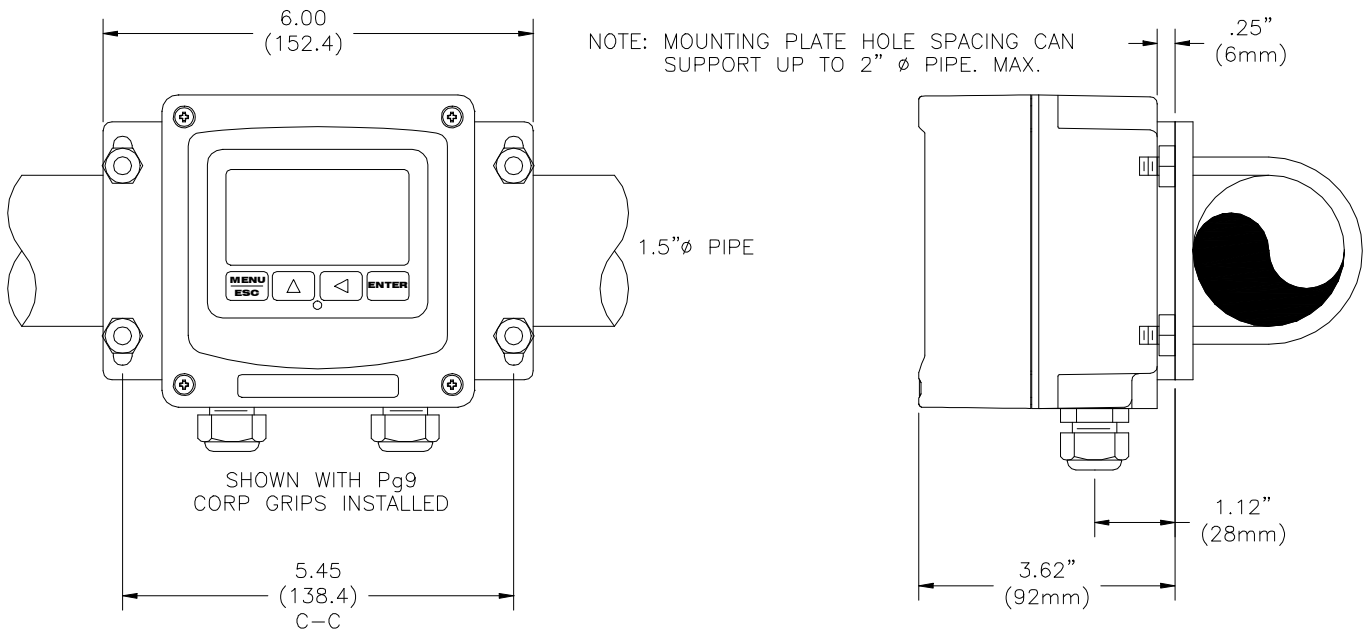
ATI-0688

**WALL MOUNTING**



ATI-1033

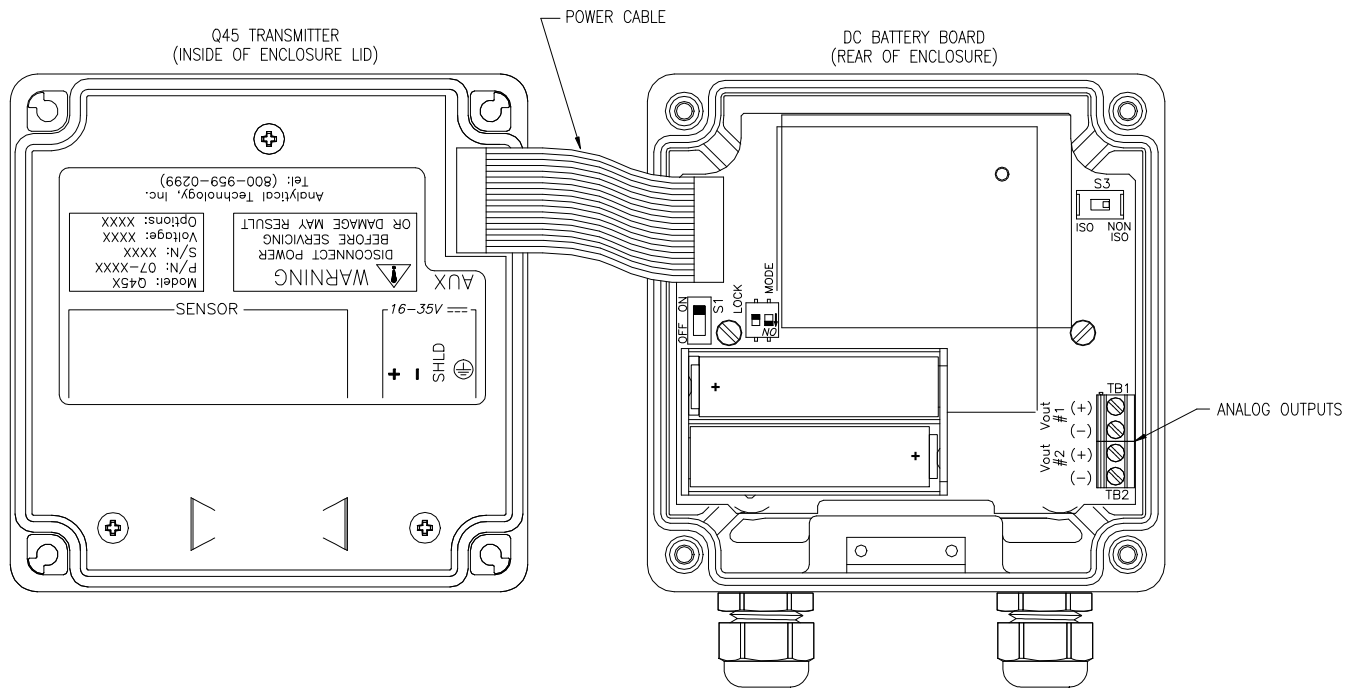
**PIPE MOUNTING**



NOTE: PLATE MAY BE TURNED 90° FOR VERTICAL PIPE MOUNTING

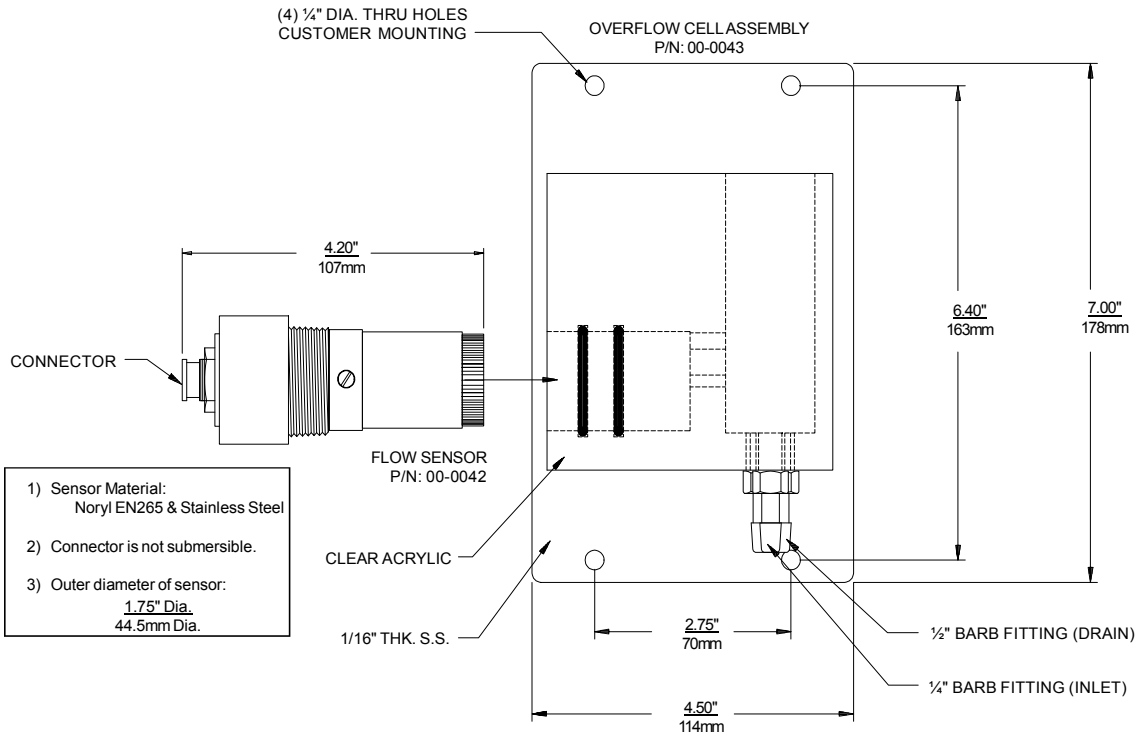
ATI-1034

**INTERNAL BATTERY CONFIGURATION**



ATI-0827b

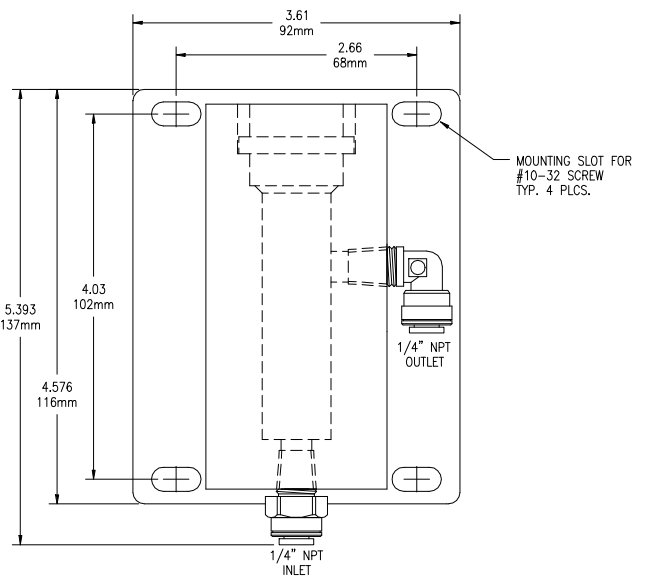
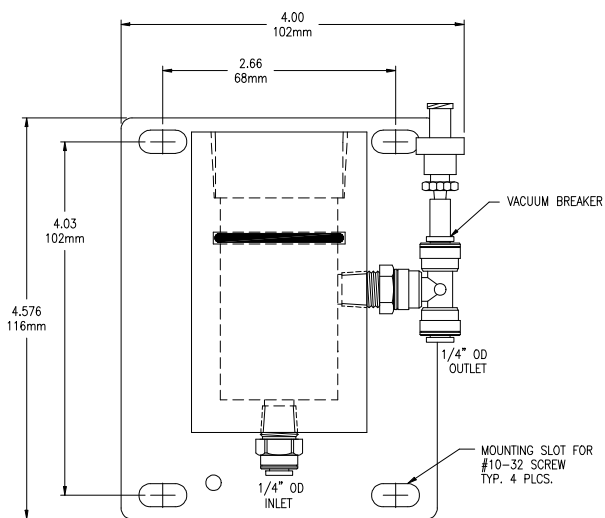
**FLOW SENSOR DIMENSIONS & OVERFLOW CELL INSTALLATION**



ATI-0196

**CI2 SEALED FLOWCELL ASSEMBLY (00-1522)**

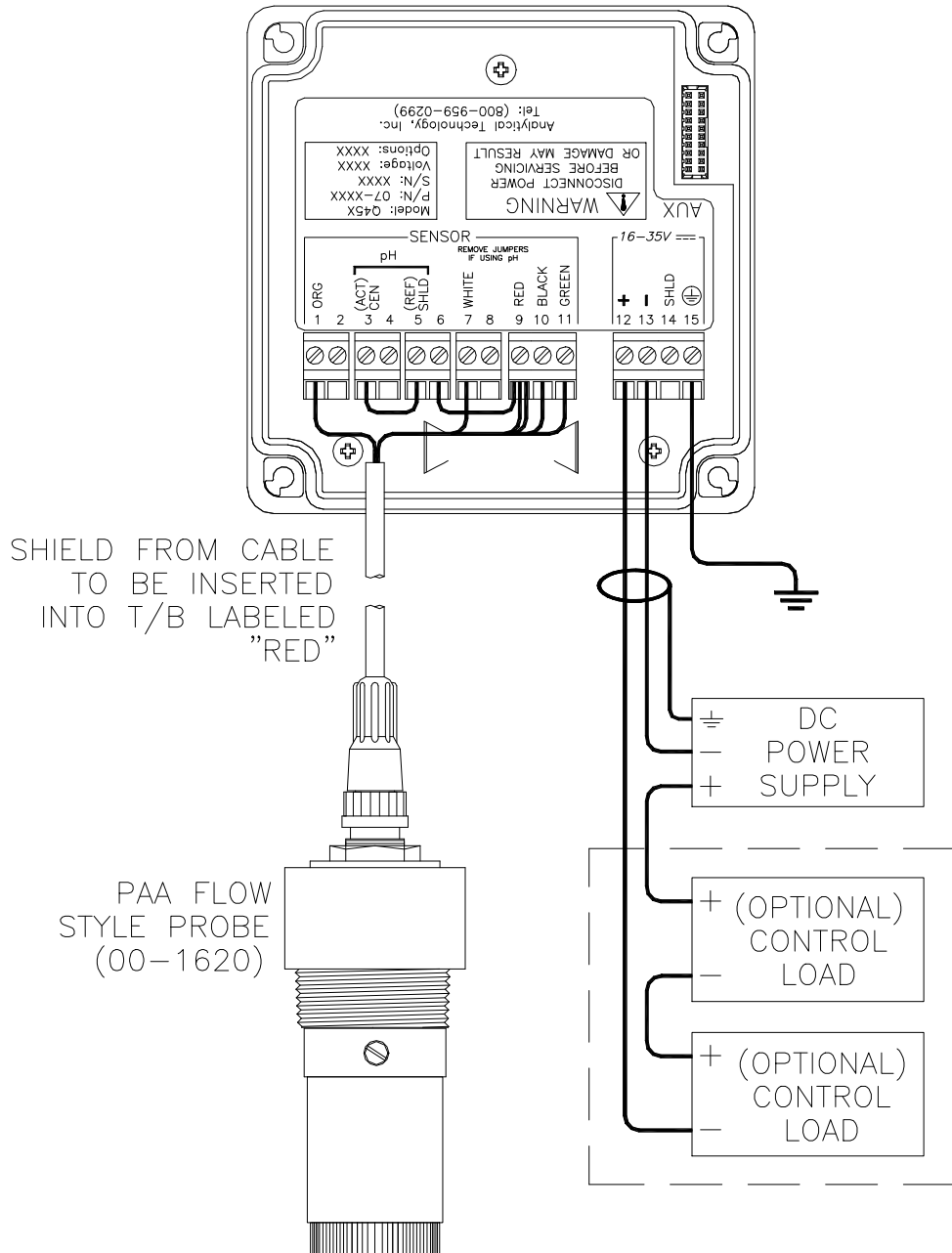
**pH SEALED FLOWCELL ASSEMBLY (00-1527)**



ATI-0859

Material: Acrylic  
Mounting Plate: PVC

**ELECTRICAL CONNECTIONS - 2-WIRE TRANSMITTER**



- NOTES:** 1. Voltage between Terminals 12 & 13 MUST be between 16 & 35 VDC.  
 2. Earth ground into Terminal 15 is HIGHLY recommended. This connection can greatly improve stability in electrically noisy environments.

**SENSOR CONNECTIONS - REMOTE JUNCTION BOX**

