

## HEAVY-DUTY REPAIRABLE STAINLESS GAUGE

REOTEMP's Series PR gauge offers rugged, all-welded stainless steel construction ideal for heavy-duty industrial applications. The stainless steel case, tube and socket are welded together for superior case sealing and gauge integrity. The twist-off bayonet ring offers easy-access for field repair and calibration services. Liquid filling (at the factory or in the field) is recommended for applications involving vibration.



Fillable



Dials



Custom Logo

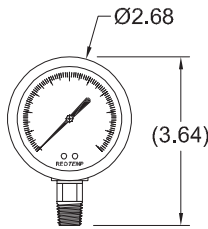


Diaphragm Seal  
Compatible

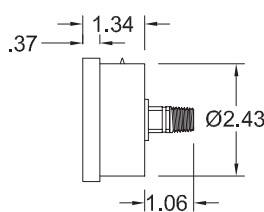


PR25

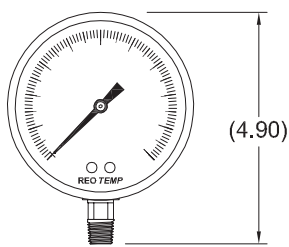
PR35



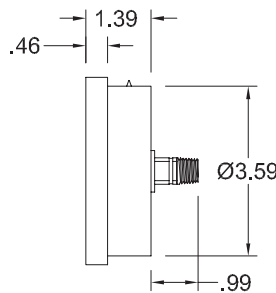
PR25



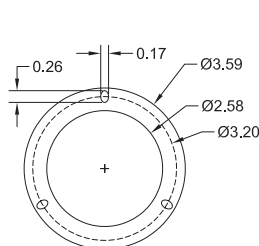
\*dimensions in inches



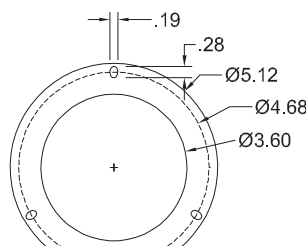
PR35



\*dimensions in inches



PR25 Mounting Flange



PR35 Mounting Flange

### FEATURES / BENEFITS

- All-Welded Stainless Steel Construction
- Removable Bayonet Ring with Adjustable Pointer
- Field Fillable Case, NEMA4/IP65
- Rugged, Long-Lasting Design



### SPECIFICATIONS

#### Construction Materials:

- Non Wetted
  - Case: 304SS
  - Ring: 304SS, Twist-Off Bayonet
  - Dial: White Aluminum, Black Letters

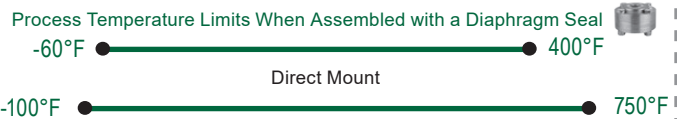
- Wetted
  - Tube: 316LSS
  - Socket: 316SS

- Case-to-Socket
  - Welded

- Lens
  - Tempered Safety Glass
  - Plastic
  - Laminated Safety Glass

#### Temperature Limits:

- Ambient
  - 40°F ————— 150°F
- Process
  - 40°F ————— 250°F



Remote Mount or Cooling Tower  
\*Exact temperature limits will depend on diaphragm seal & fill fluid.

**Accuracy:** 2 - 1 - 2%, ASME Grade A  
(2% up, 4% down for 10,000 psi and higher).

**Fillable:** Yes

**Restrictor Screw:** Yes, removable

**Weight:** 2.5" = 0.4 lbs (0.6 lbs filled)  
3.5" = 0.7 lbs (1.0 lbs filled)

**Maximum Working Pressure:**

- Stable = 100%
- Momentary = 130% of scale

## HEAVY-DUTY REPAIRABLE STAINLESS GAUGE



Visit [reotemp.com](http://reotemp.com)

- ✓ Check Stock
- ✓ Get Price
- ✓ Configure Part #
- ✓ Download PDF Data Sheets

**HOW TO ORDER:** Choose options to build a part number. For example, the gauge on page 1: **PR25S1A4P18-D-P-MP**

PR25	S	1	A	4	P18	-D	-P	-MP
DIAL SIZE	CASE TYPE	TUBE & SOCKET	MOUNT TYPE	CONNECTION	RANGE CODE	CASE FILL	LENS	ACCESSORIES
PR25 = 2.5" PR35 = 3.5"	S = 304SS *T = 316SS	1 = 316SS *3 = Monel	<b>A</b> =  Bottom <b>B</b> =  Bottom/Rear Flange <b>C</b> =  Center Back <b>D</b> =  Center Back "U" Clamp <b>E</b> =  Center Back/Front Flange	<b>4</b> = 1/4" NPT <b>*8</b> = 1/8" NPT <b>2</b> = 1/2" NPT (Option 2 Available on PR35 ONLY) <b>M</b> = 1/4" Tube Fitting	See Master Range Code Sheet on page 41  Common Ranges <b>P01</b> = -30 in HG-0 psi <b>P03</b> = -30 in HG-0-30 psi <b>P16</b> = 0-30 psi <b>P18</b> = 0-100 psi <b>P20</b> = 0-200 psi <b>P21</b> = 0-300 psi <b>P25</b> = 0-1,000 psi <b>P34</b> = 0-5,000 psi  Available Ranges ■ Vac to 15,000 PSI ■ Gauge Pressure, Vac or Compound ■ Lowest Range = 10 psi	<b>-D</b> = Dry <b>-G</b> = Glycerin <b>-S</b> = Silicone <b>-W</b> = Glycerin/Water (65/35)	<b>-T</b> = Tempered Safety Glass (std. on 3.5") <b>-P</b> = Plastic (std. on 2.5") <b>-S</b> = Laminated Safety Glass	<b>-MP</b> = Max. Pointer (Available on 2.5" ONLY) <b>-C3</b> = 3 Point Calibration Certificate <b>-R1</b> = 1% Full Scale Accuracy <b>-HV</b> = Hi-Vis™ Dial <b>-NC</b> = NACE Compliance Certificate

### Diaphragm Seal Suitability Guide

\*Non-standard configuration

For applications where a diaphragm seal is required, the following diaphragm seal model types are most commonly assembled and filled to Series PR25/35 pressure gauges. This matrix identifies which diaphragm seal is appropriate based on the specified pressure range. Please reference the diaphragm seal data sheet and seal fill fluid guide for additional application considerations including max pressure, temperature limits, and material compatibility.

#### Diaphragm Seal Model

#### Total Gauge Span\* (in psi)

		15	30	45	60	75	100	160	200 +
Mini Seals	MS4	T	T	T					
	MS6	T							
	MS8								
Threaded Flush	1/2"	X	S	S	T	T	T	T	
	3/4"	X	T	T	T	T	T		
	1"	T	T	T					
	1.5"								
Offline	W5								
	T5								
Sanitary	3/4" TC	X	S	S	T	T	T	T	
	1.5" TC	T	T						
	2" TC								

\*Total gauge span is additive of negative and positive pressures.

Example: -15 - 0 - 30 psi = 45 psi span

**T** Assembly will function correctly with minimal accuracy degradation.

**S** Assembly will function correctly given stable process temperature

**X** Assembly is highly sensitive to orientation and temperature variance. REOTEMP cannot guarantee a stated accuracy.

**X** Assembly will not work. The diaphragm does not displace enough fill fluid to drive the pressure gauge.

