

numatics	INSTALLATION AND MAINTENANCE INSTRUCTIONS	GB
	INSTRUCTIONS D'INSTALLATION ET DE MAINTENANCE	FR
	INBETRIEBNAHME - UND WARTUNGSANLEITUNG	DE
	INSTRUCCIONES DE PUESTA EN MARCHA Y MANTENIMIENTO	ES
	ISTRUZIONI DI MESSA IN SERVIZIO E MANUTENZIONE	IT
	ALGEMENE INSTALLATIE- EN ONDERHOUDSINSTRUCTIES	NL
	INSTALLASJONS- OG VEDLIKEHOLDSINSTRUKSER	NO
	INSTALLATIONS- OCH UNDERHÅLLSINSTRUKTIONER	SE
	ASENNUS - JA HUOLTO-OHJEET	FI
	INSTALLATIONS - OG VEDLIGEHOIDSANVISNINGER	DK
	INSTRUÇÕES DE INSTALAÇÃO E MANUTENÇÃO	PT
	ΟΔΗΓΙΕΣ ΤΟΠΟΘΕΤΗΣΗΣ ΚΑΙ ΣΥΝΤΗΡΗΣΗΣ	GR
	POKRYTY PRO INSTALACI A ÚDRŽBU	CZ
	INSTRUKCJA MONTAŻU I KONSERWACJI	PL
	TELEPÍTÉSI ÉS KARBANTARTÁSI ÚTMUTATÓ	HU
	Инструкция по установке и обслуживанию	RU

ISO 6431 anti-corrosive cylinders

431



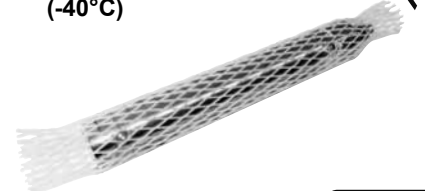
512068-001 /A
Availability, design and specifications are subject to change without notice. served.



Temperatures

431

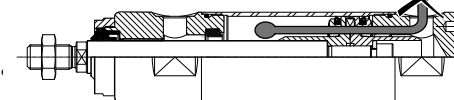
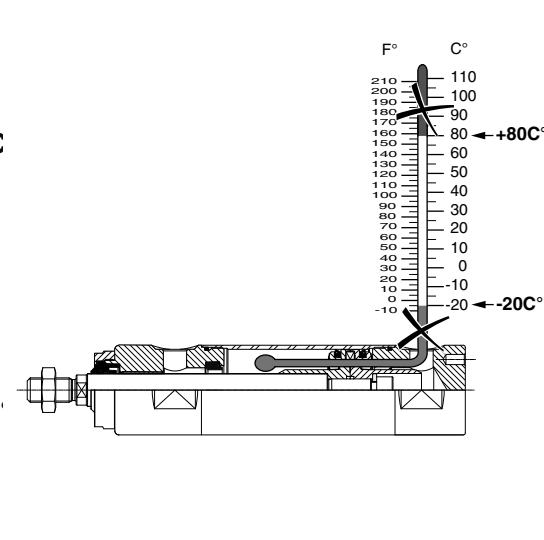
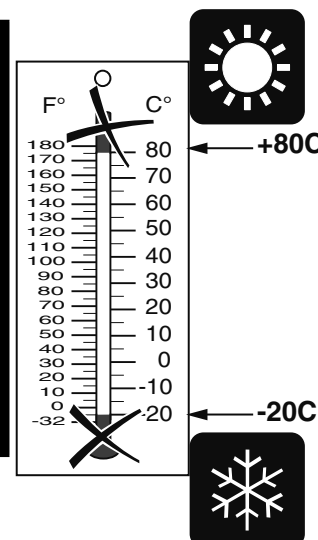
STORAGE CONDITIONS



humidity relative
≤ 95%



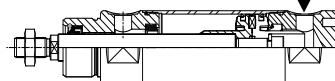
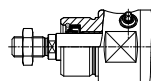
OPERATING CONDITIONS



Characteristics

431

OPERATING
PRESSURE

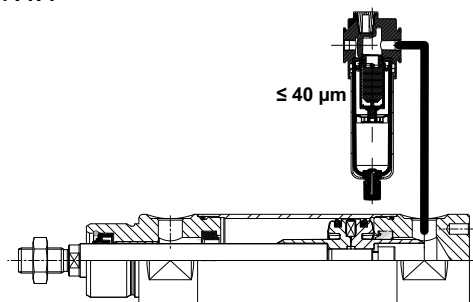
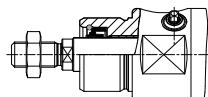


Pmax. = 10 bar
[1 bar = 100 kPa]

ISO 8573-1 (2010)]: Level 7.4.4

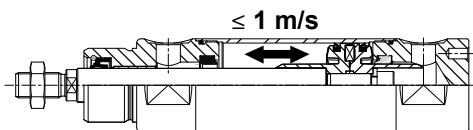
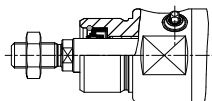


AIR
NEUTRAL GASES



≤ 40 µm

LIFE CYCLE



≤ 1 m/s

LUBRICATING OIL

Non-detergent oil without aggressive additives

VG 32 class (ISO 3448)

Viscosity 29 to 35 cSt (mm²/s) at 40°C

Silicone-base lubricants



G431A-3K---A00

431

G 431 A - 3 K --- A00

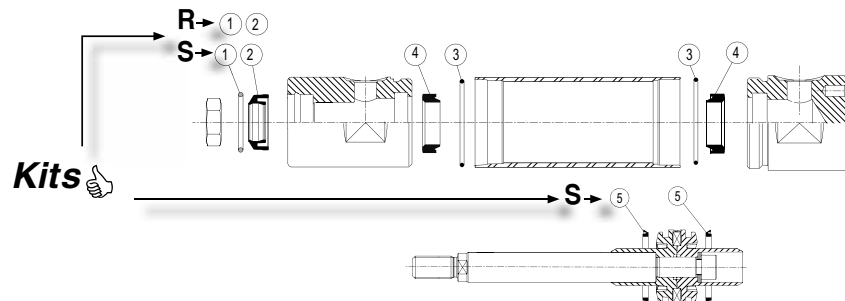
Ø (mm)
3 = 32
4 = 40
5 = 50
6 = 63
8 = 80



Kits

M 431 A - S R K 0000 A00

Ø (mm)
3 = 32
4 = 40
5 = 50
6 = 63
8 = 80

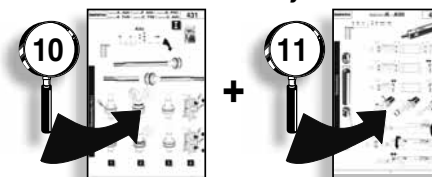


Kits

Dismounting

Ø (mm)	
32	33 mm
40	40 mm
50	50 mm
63	64 mm
80	82 mm

Reassembly



G 431 A - 3 P --- A00

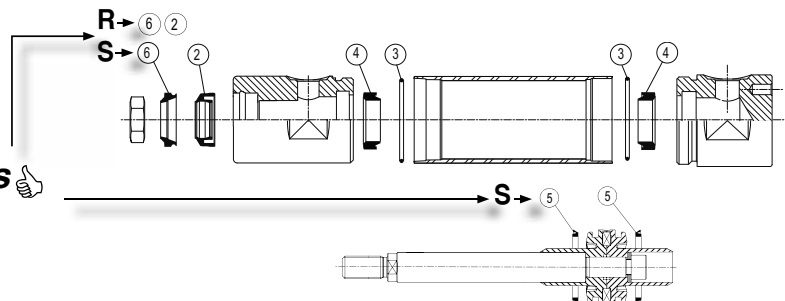
Ø (mm)
3 = 32
4 = 40
5 = 50
6 = 63
8 = 80



Kits 👍

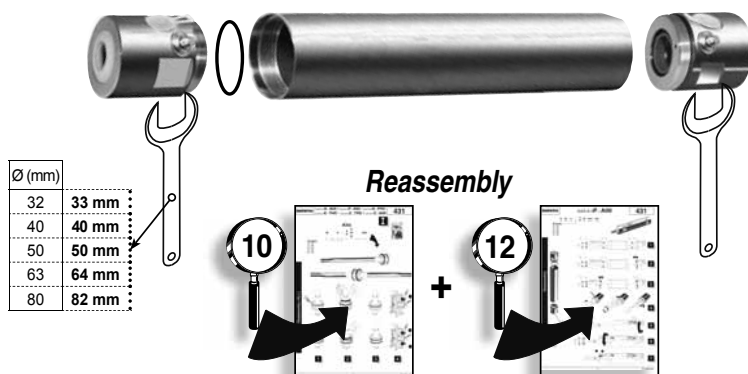
M 431 A - S R P 0000 A00

Ø (mm)
3 = 32
4 = 40
5 = 50
6 = 63
8 = 80



Kits

Dismounting



G 431 A - 3 K --- PRC

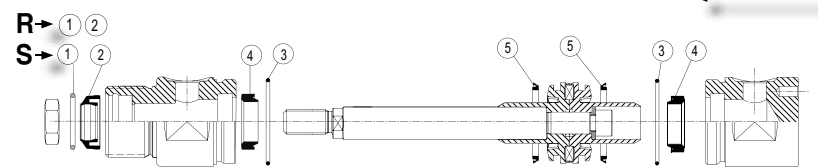
Ø (mm)
3 = 32
4 = 40
5 = 50
6 = 63
8 = 80



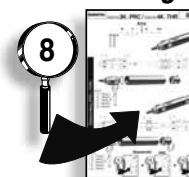
Kits 👍

M A - S R K A00

Ø (mm)
3 = 32
4 = 40
5 = 50
6 = 63
8 = 80



Dismounting



G 431 A - 4 K --- THR

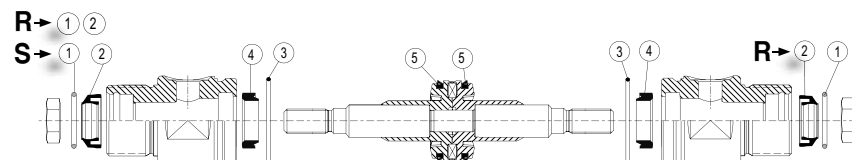
Ø (mm)
3 = 32
4 = 40
5 = 50
6 = 63
8 = 80



Kits 👍

M A - S R K A00

Ø (mm)
3 = 32
4 = 40
5 = 50
6 = 63
8 = 80



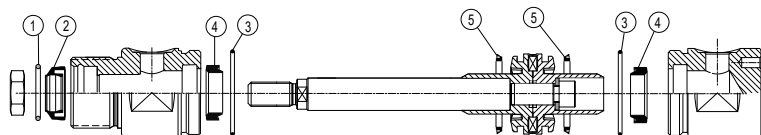
Kits (THR)

numatics G431A-3K---PRC / G431A-4K---THR **431**

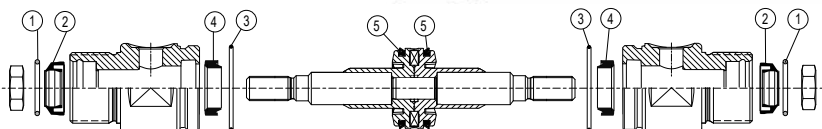
Kits

M A - S R K A00

Ø (mm)
3 = 32
4 = 40
5 = 50
6 = 63
8 = 80



Ø (mm)	
32	33 mm
40	40 mm
50	50 mm
63	64 mm
80	82 mm



Ø (mm)	
32	33 mm
40	40 mm
50	50 mm
63	64 mm
80	82 mm

Reassembly

PRC

THR



numatics G431A-3C---TRE / G431A-3C---A00 **431**

G 431 A - 3 C --- TRE

Ø (mm)
3 = 32
4 = 40
5 = 50
6 = 63
8 = 80

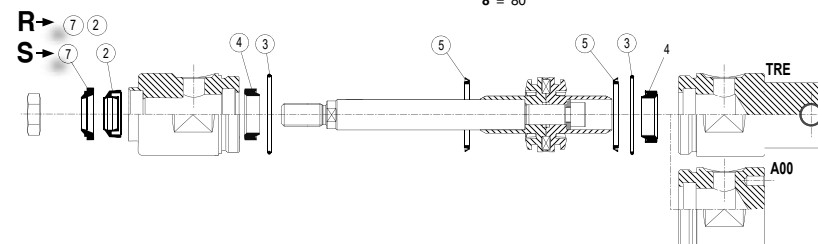
G 431 A - 3 C --- A00

Ø (mm)
3 = 32
4 = 40
5 = 50
6 = 63
8 = 80

Kits

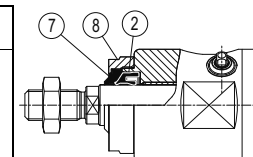
M 431 A - S R C 0000 A00

Ø (mm)
3 = 32
4 = 40
5 = 50
6 = 63
8 = 80



Kits

Ø (mm)	Repères 2 + 7 + 8
32	M431A3EC0000A00
40	M431A4EC0000A00
50-63	M431A5EC0000A00
80	M431A8EC0000A00

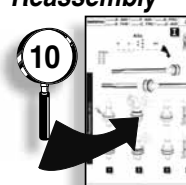


Dismounting



Reassembly

Ø (mm)		Ø (mm)
32	27 mm	33 mm
40-50-63	36 mm	40 mm
80	46 mm	50 mm
		64 mm
		82 mm
		80 mm



numatics

G431A-3K---A00 / G431A-3P---A00 / G431A-3K---PRC
G431A-4K---THR / G431A-3C---TRE / G431A-3C---A00

431

Kits

M A - S R C K P A00

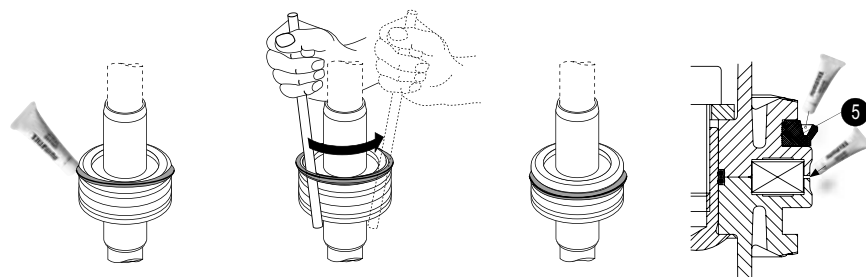
Ø (mm)

3 = 32
4 = 40
5 = 50
6 = 63
8 = 80

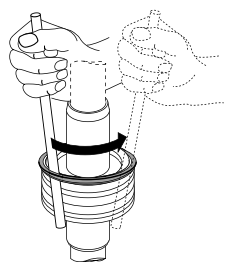
I



Reassembly (ALL)



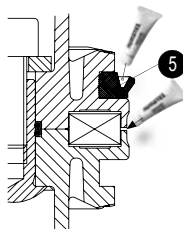
1



2



3



4

numatics

G431A-3K---A00

431

M 431 A - S R K 0000 A00

Ø (mm)

3 = 32
4 = 40
5 = 50
6 = 63
8 = 80

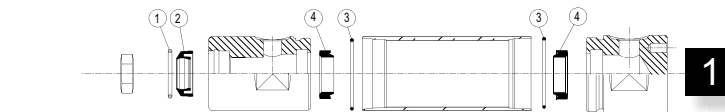


Reassembly

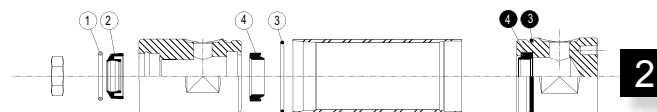


Ø (mm)

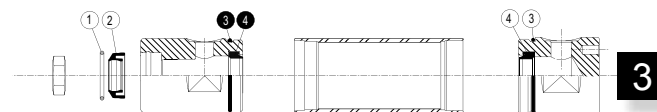
32	33 mm
40	40 mm
50	50 mm
63	64 mm
80	82 mm



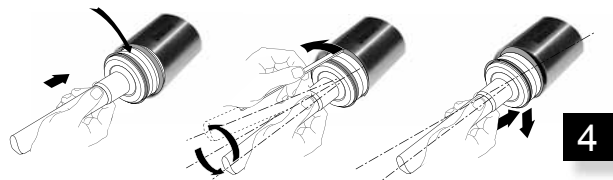
1



2



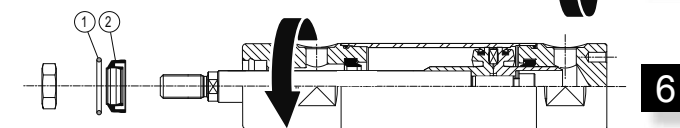
3



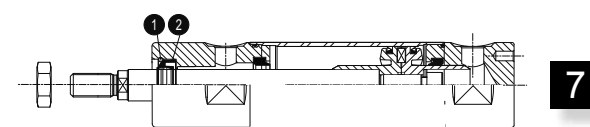
4



5



6



7

numatics

G431A-3P---A00

431

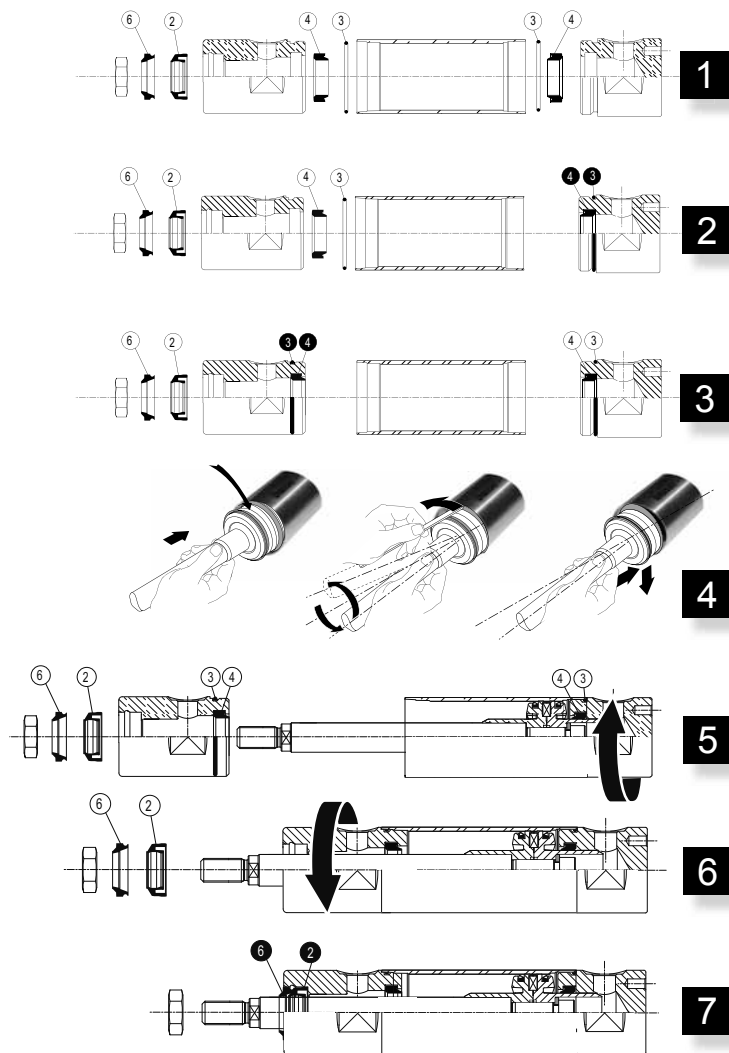
M 431 A - S R P 0000 A00

Ø (mm)
3 = 32
4 = 40
5 = 50
6 = 63
8 = 80



Reassembly

Ø (mm)	
32	33 mm
40	40 mm
50	50 mm
63	64 mm
80	82 mm



numatics

G431A-3K---PRC

431

Kits

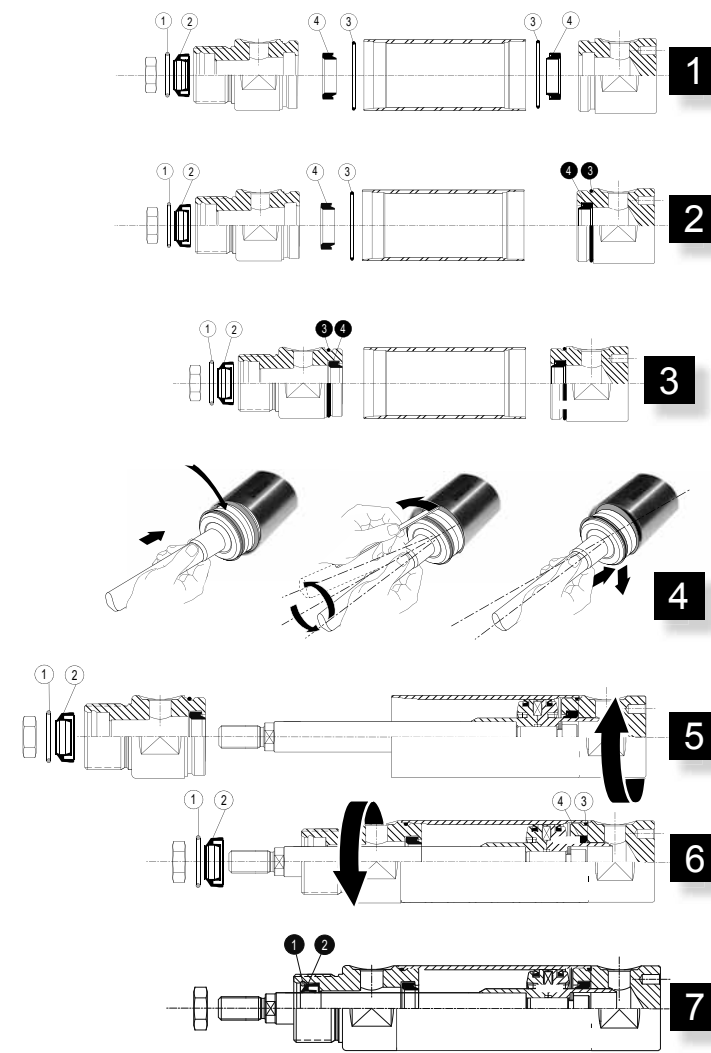
M A - S R K A00

Ø (mm)
3 = 32
4 = 40
5 = 50
6 = 63
8 = 80



Reassembly (PRC)

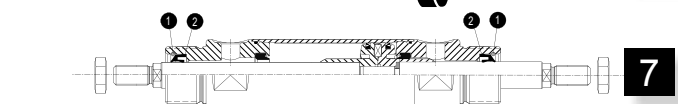
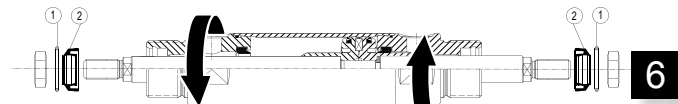
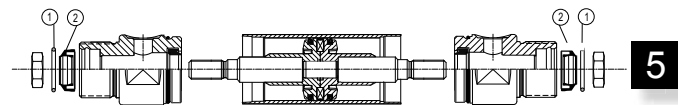
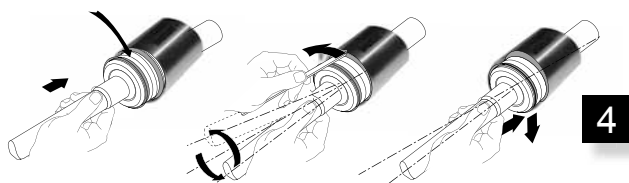
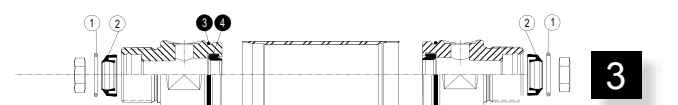
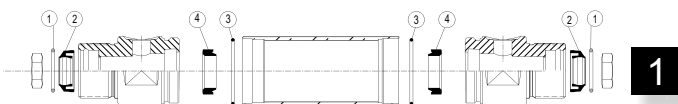
Ø (mm)	
32	33 mm
40	40 mm
50	50 mm
63	64 mm
80	82 mm



Kits (2x)

M A - S K A00

Ø (mm)
3 = 32
4 = 40
5 = 50
6 = 63
8 = 80

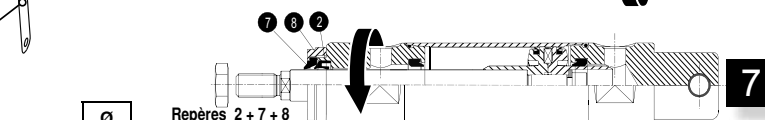
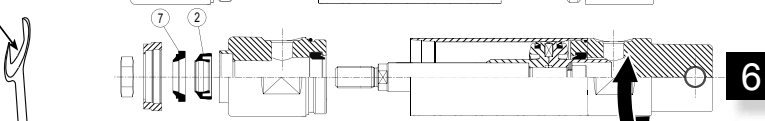
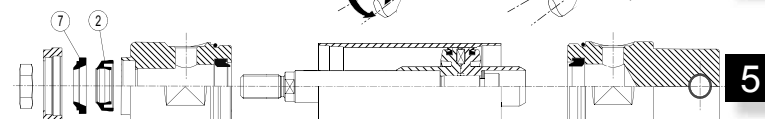
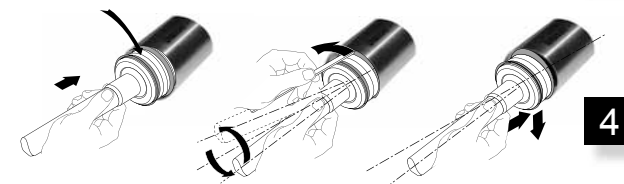
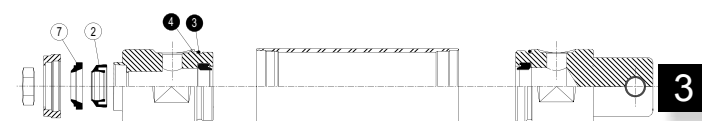


Ø (mm)	
32	33 mm
40	40 mm
50	50 mm
63	64 mm
80	82 mm

Kits

M 431 A - S C 0000 A00

Ø (mm)
3 = 32
4 = 40
5 = 50
6 = 63
8 = 80



Ø (mm)	
32	33 mm
40	40 mm
50	50 mm
63	64 mm
80	82 mm

Ø (mm)	
32	M431A3EC0000A00
40	M431A4EC0000A00
50-63	M431A5EC0000A00
80	M431A8EC0000A00

Repères 2 + 7 + 8

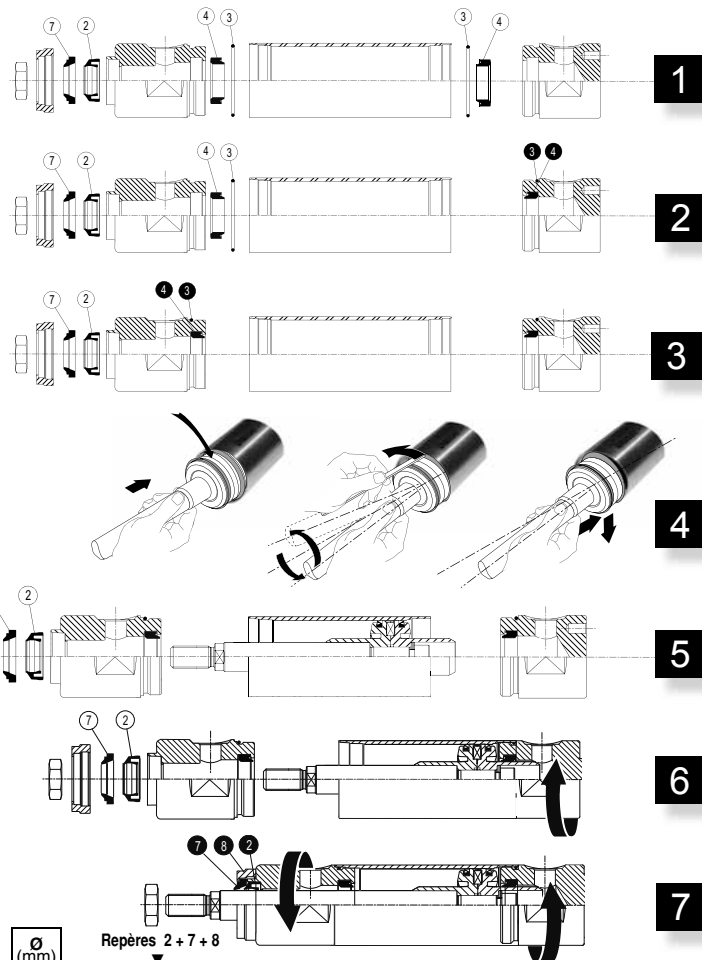
Kits

M 431 A - S C 0000 A00
R

Ø (mm)
3 = 32
4 = 40
5 = 50
6 = 63
8 = 80



Reassembly (TRE)



Ø (mm)	
32	33 mm
40	40 mm
50	50 mm
63	64 mm
80	82 mm

Ø (mm)	
32	M431A3EC0000A00
40	M431A4EC0000A00
50-63	M431A5EC0000A00
80	M431A8EC0000A00

Repères 2 + 7 + 8