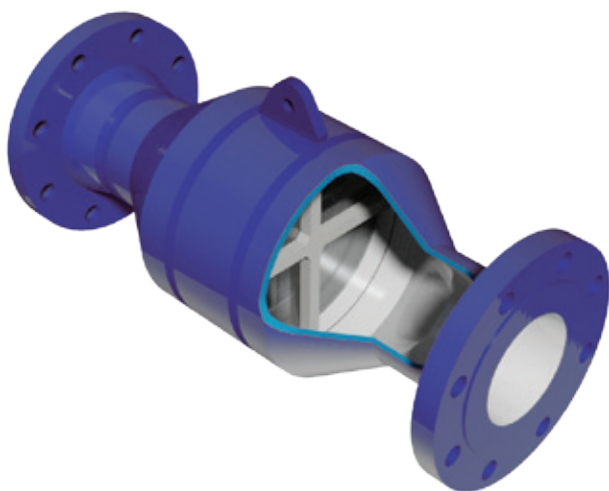


ANDERSON GREENWOOD WHESSOE MODELS 400A/400AE FLAME ARRESTERS

In-line deflagration flame arresters designed to prevent the propagation of subsonic flames



FEATURES

- Concentric and eccentric model variants available.
- Fabricated housings.
- Advanced crimped stainless steel element construction as standard. Other materials available.
- Mounted vertically or horizontally.
- Uni-directional.
- Can be used in combination with a pressure/vacuum valve.
- Independently tested and certified.
- Manufactured to ISO 9001:2008.

GENERAL APPLICATION

The 400A/400AE are used in applications with subsonic flames and mounted in process or vent lines. They can be located in the pipeline or at the end of the pipe vent.

TECHNICAL DATA

Materials:	Carbon steel, stainless steel
Sizes:	DN 6 to 400 (1/8" to 16")
Connections:	Threaded, flanged or plain
Temperature range:	-20° to +165°C (-4° to +329°F)
Gas groups:	IIA, IIB1, IIB2, IIB3, IIB, IIC*
Certification:	ATEX Directive 94/9/EC; PED 97/23/EC; ISO 16852

* Up to and including DN 150 (6")

ANDERSON GREENWOOD WHESSOE MODELS 400A/400AE FLAME ARRESTERS

MATERIALS AND CONNECTION OPTIONS

Materials

Carbon steel and stainless steel.

Connection pipe size

Threaded	DN 6 to 80 (1/8" to 3")
Flanged	DN 15 to 400 (1/2" to 16")
Plain	DN 20 to 150 (3/4" to 6")

Gas groups

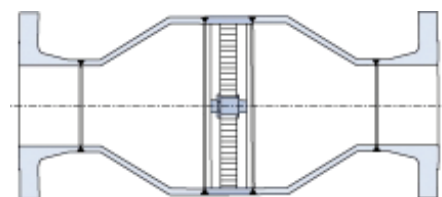
- IIA
- IIB1
- IIB2
- IIB3
- IIB
- IIC*

* Only available up to and including DN 150 (6")

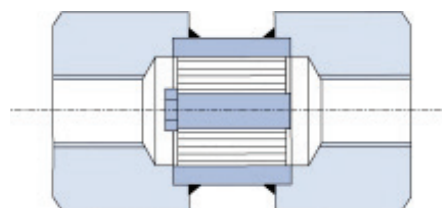
NOTE

Accessories, special materials and connections are available on request.

400A FLANGED* (LF VERSION)



400A SCREWED (LR VERSION)



* Eccentric variants are available

TEMPERATURE RANGE

Type	Connection	Gas group	Size range	Short burn	Max. temperature	Element
400A/400AE	Flanged	IIA	DN 12/400	Yes	-20 /+60°C	1 x 0.8 mm
400A/400AE	Flanged	IIB1/IIB3	DN 12/400	Yes	-20 /+60°C	1 x 0.8/0.6 mm
400A/400AE	Flanged	IIB	DN 12/400	Yes	-20 /+60°C	1 x 0.45 mm
400A/400AE	Flanged	IIC	DN 12/150	Yes	-20 /+60°C	1 x 0.15 mm
400A/400AE	Flanged	IIA	DN 12/400	No	-20 /+165°C	1 x 0.6 mm
400A/400AE	Flanged	IIB1/IIB3	DN 12/400	No	-20 /+165°C	1 x 0.38 mm
400A/400AE	Flanged	IIB	DN 12/400	No	-20 /+165°C	1 x 0.3 mm
400A/400AE	Flanged	IIC	DN 12/500	No	-20 /+165°C	1 x 0.15 mm
400A	Screwed	IIA	DN 6/40	Yes	-20 /+60°C	1 x 0.8 mm
400A	Screwed	IIB1/IIB3	DN 6/40	Yes	-20 /+60°C	1 x 0.8/0.6 mm
400A	Screwed	IIB	DN 6/40	Yes	-20 /+60°C	1 x 0.45 mm
400A	Screwed	IIC	DN 6/40	Yes	-20 /+60°C	1 x 0.15 mm
400A	Screwed	IIA	DN 6/40	No	-20 /+165°C	1 x 0.6 mm
400A	Screwed	IIB1/IIB3	DN 6/40	No	-20 /+165°C	1 x 0.38 mm
400A	Screwed	IIB	DN 6/40	No	-20 /+165°C	1 x 0.3 mm
400A	Screwed	IIC	DN 6/40	No	-20 /+165°C	1 x 0.15 mm

NOTES

All sizing and selection must be conducted by the factory.
Standard elements are double the pipe size.

ANDERSON GREENWOOD WHESSOE MODELS 400A/400AE FLAME ARRESTERS

SELECTION GUIDE

Example:	400A	50	LF	100	19	60	S3	S3
Model								
400A								
400AE								
Connection diameter, mm (in)								
Threaded								
DN 6 to 40 (1/8" to 1 1/2") - 400A only								
DN 50 to 80 (2" to 3")								
DN 20 to 50 (3/4" to 2") - 400A only								
Flanged								
DN 15 to 400 (1/2" to 16")								
DN 20 to 50 (3/4" to 2")								
Plain								
DN 20 to 150 (3/4" to 6") - 400A only								
Element code								
LF								
Element diameter, mm (in)								
DN 25 to 50 (1" to 2")								
DN 40 to 600 (1 1/2" to 24")								
DN 50 to 300 (2" to 12")								
Element width, mm (in)								
19 19 mm (0.75")								
38 38 mm (1.5")								
76 76 mm (3.0")								
Cell height, mm (in)								
80 0.80 mm (0.032")								
60 0.60 mm (0.024")								
45 0.45 mm (0.018")								
38 0.38 mm (0.015")								
15 0.15 mm (0.006")								
Element material								
S3 Stainless steel								
C Carbon steel								
Body material								
S3 Stainless steel								
C Carbon steel								

Neither Emerson, Emerson Automation Solutions, nor any of their affiliated entities assumes responsibility for the selection, use or maintenance of any product. Responsibility for proper selection, use, and maintenance of any product remains solely with the purchaser and end user.

Anderson Greenwood is a mark owned by one of the companies in the Emerson Automation Solutions business unit of Emerson Electric Co. Emerson Automation Solutions, Emerson and the Emerson logo are trademarks and service marks of Emerson Electric Co. All other marks are the property of their respective owners.

The contents of this publication are presented for informational purposes only, and while every effort has been made to ensure their accuracy, they are not to be construed as warranties or guarantees, express or implied, regarding the products or services described herein or their use or applicability. All sales are governed by our terms and conditions, which are available upon request. We reserve the right to modify or improve the designs or specifications of such products at any time without notice.

Emerson.com/FinalControl