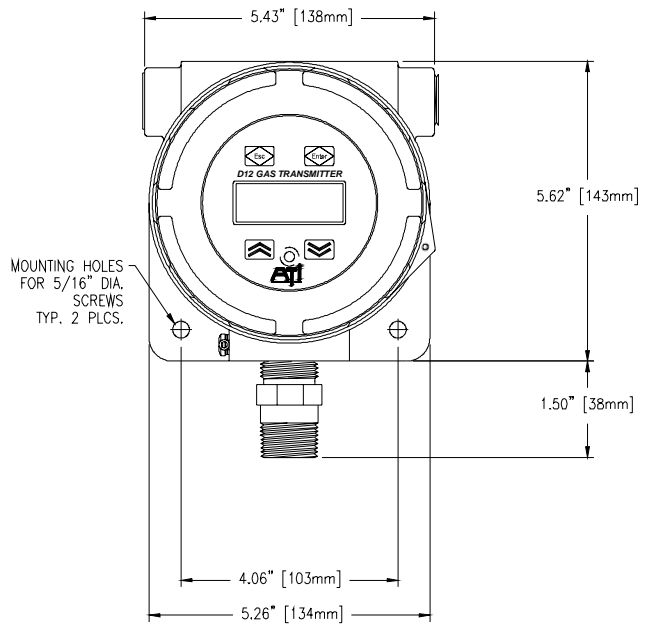
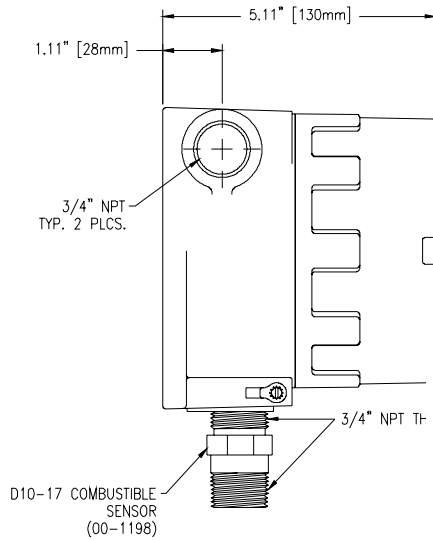


SENSOR/TRANSMITTER

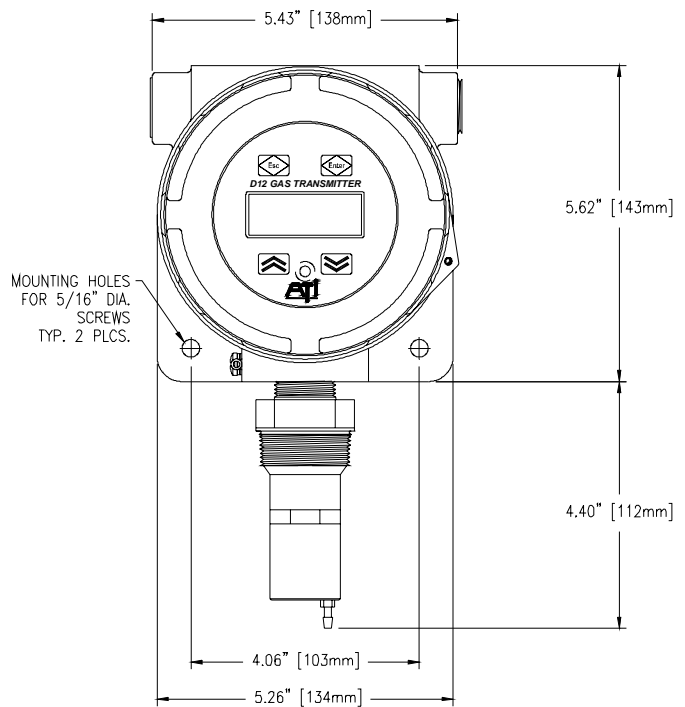
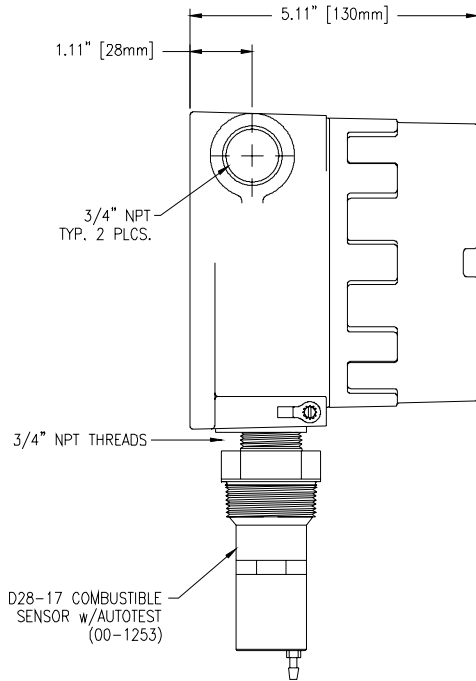


Enclosure Matl:
 Sand Cast Copper-Free Aluminum
 O-Brien yellow in color.
 Cover: Sand Cast copper-free aluminum O-Brien
 yellow in color,
 with 3-5/16" dia. tempered glass window.

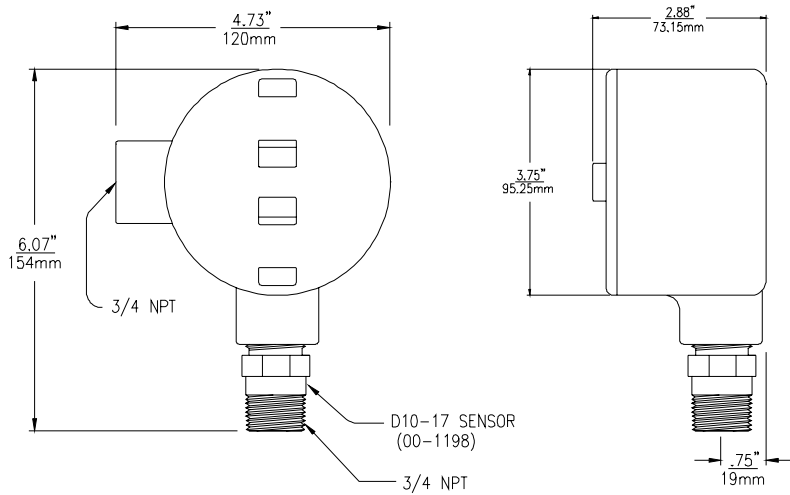
Certifications:
 FM standard 3615
 CSA standard C22.2 No.30
 UL standard 1203
 KEMA CENELAC standard EN50014, 50018

Ratings:
 UL Class I, Groups B,C,D
 Class II, Groups E,F,G
 CENELAC: EExd IIC, IP66
 Nema 4X, 78CD, 9EFG

SENSOR/TRANSMITTER WITH AUTO-TEST



JUNCTION BOX

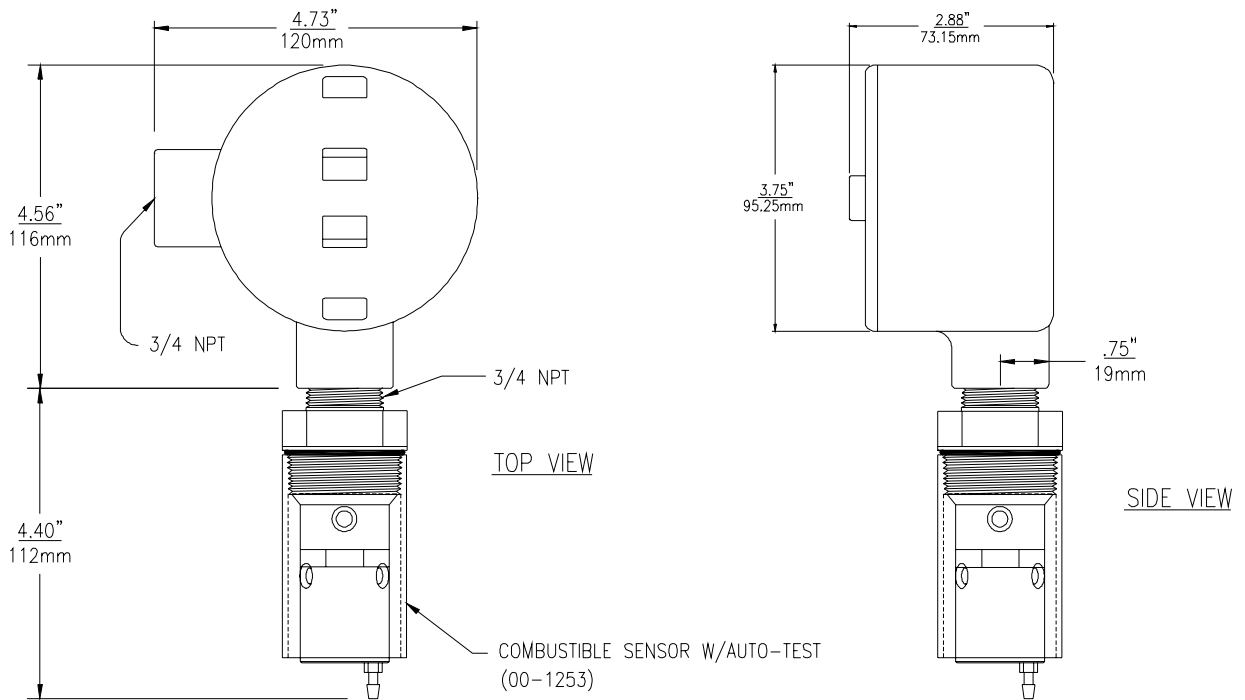


ATI-046

NOTES

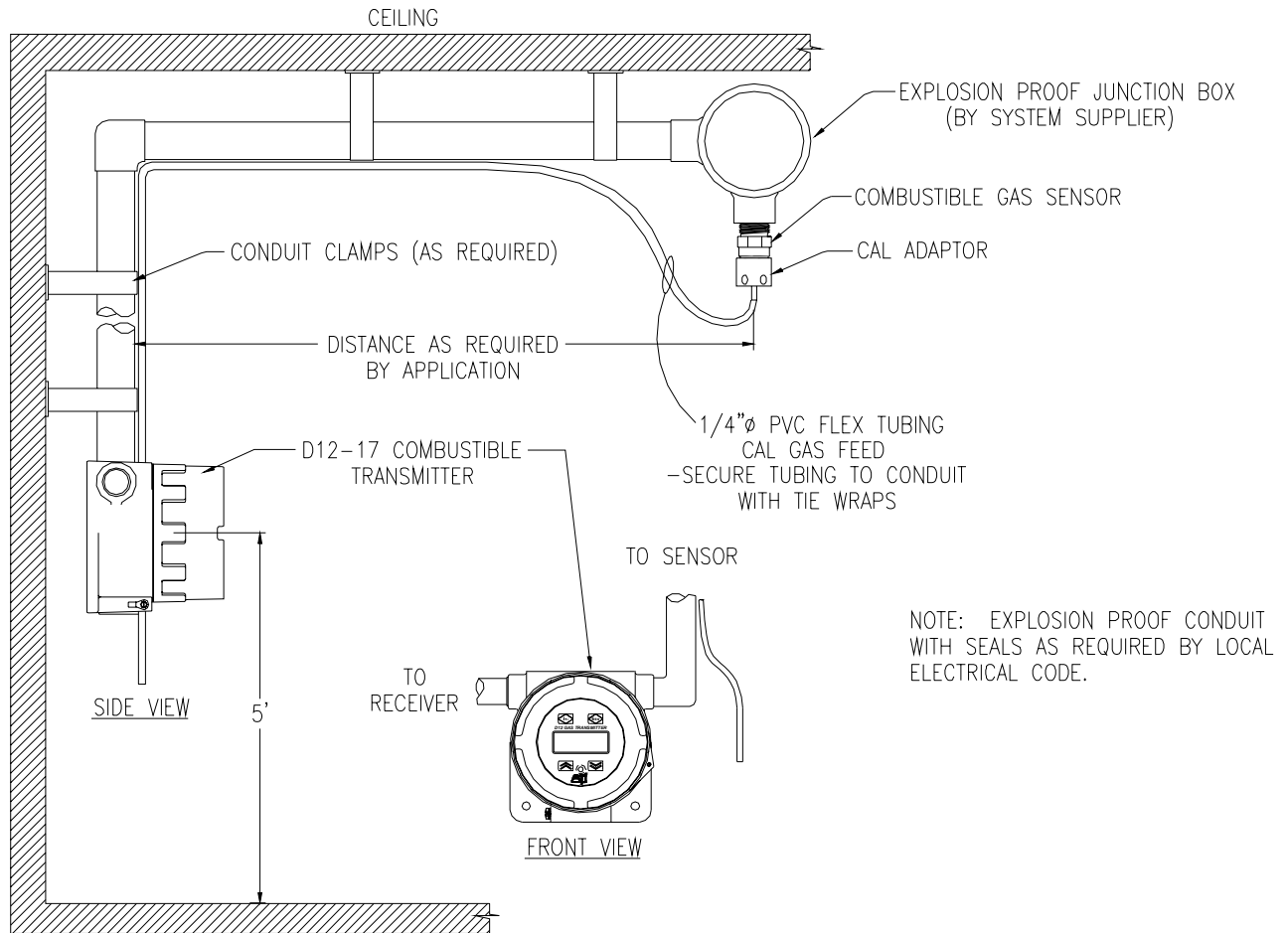
- 1) Enclosure Ratings:
 CLASS I, Groups B, C & D
 CLASS II, Groups E, F & G
 CLASS III
 - 2) Assembly is normally mounted directly to suitable explosion-proof conduit.
 - 3) When transmitter is used in classified areas, an x-proof seal should be used as required by electrical code. Any connection made must be water-tight.
- WARNING- Failure to seal the conduit entries will result in water entering the enclosure causing damage or failure to the transmitter electronics.**

JUNCTION BOX w/ AUTO-TEST

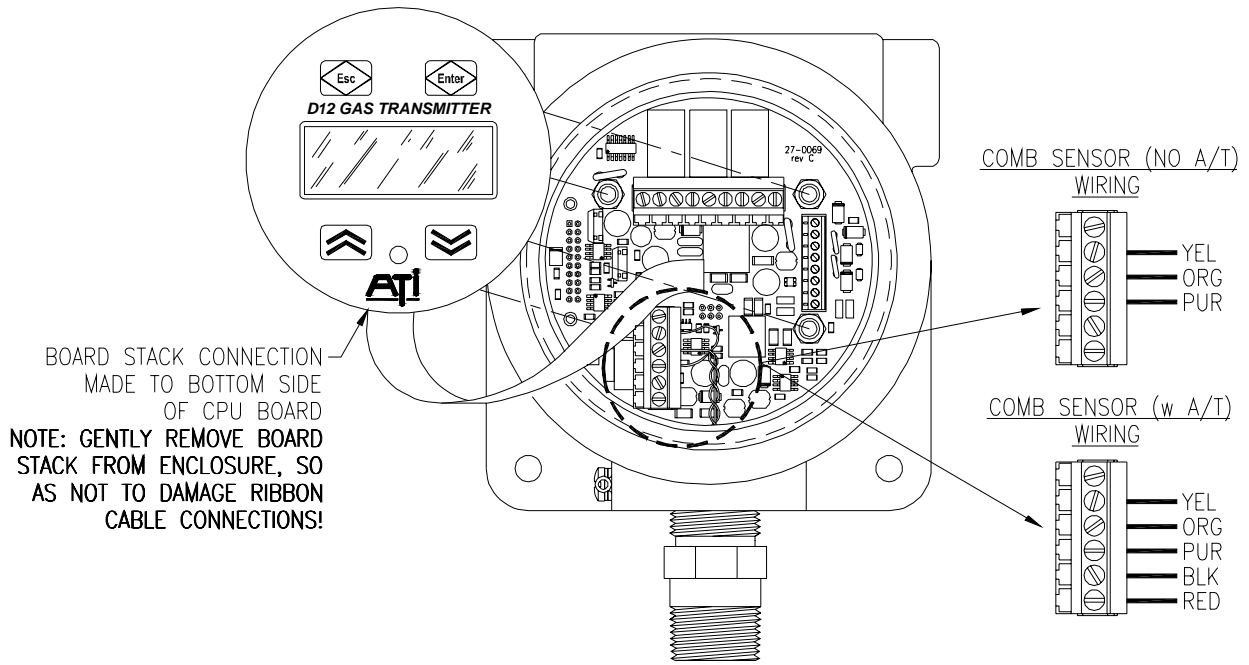


ATI-0396

DUAL CONDULET INSTALLATION

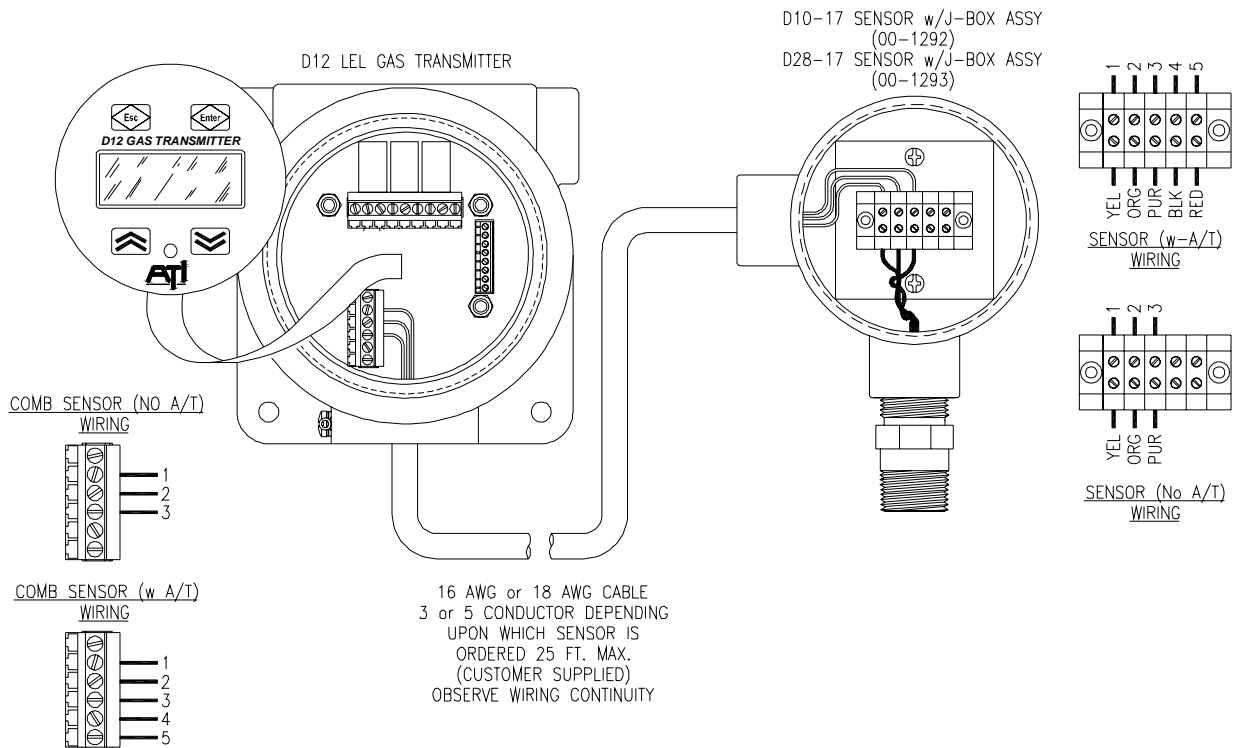


STANDARD SYSTEM



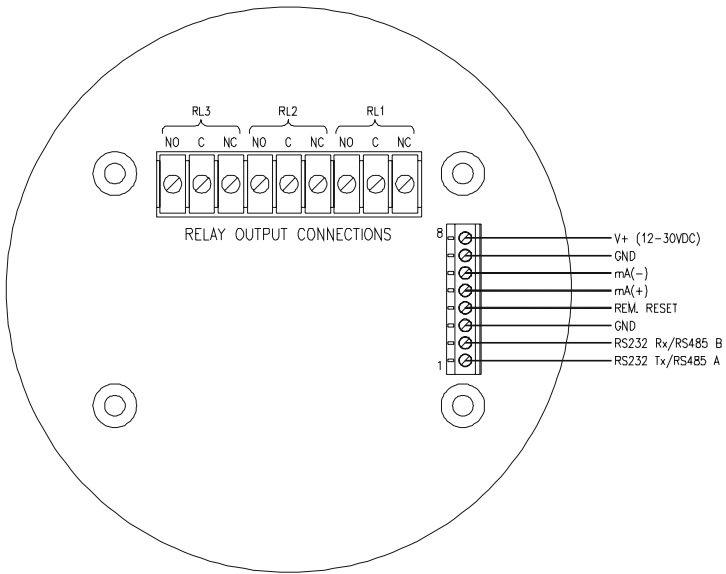
ATI-0282

STANDARD SYSTEM WITH JUNCTION BOX



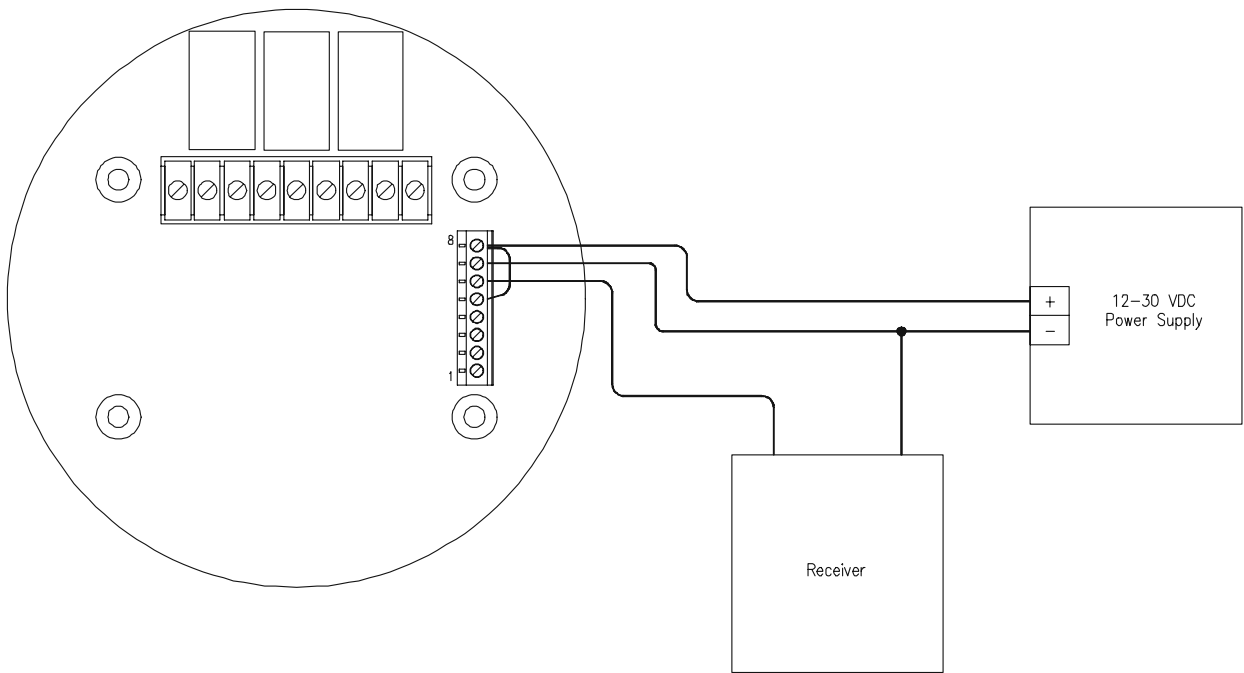
ATI-0283

POWER SUPPLY PCB GENERAL LAYOUT



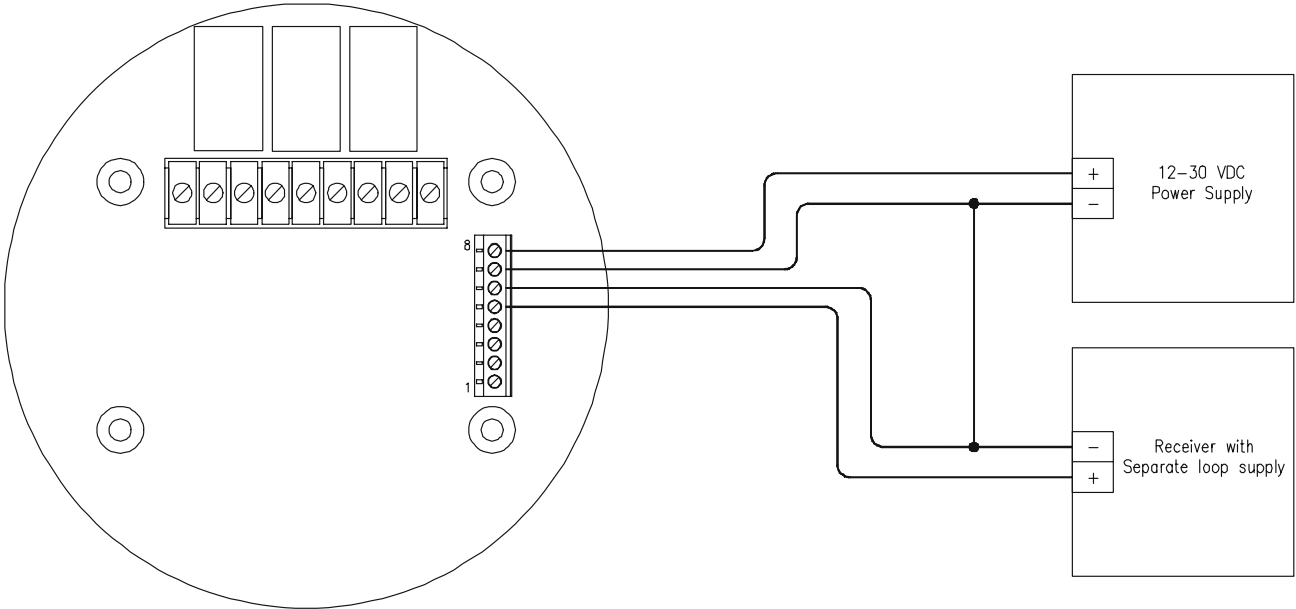
ATI-0526

3-WIRE WIRING DIAGRAM



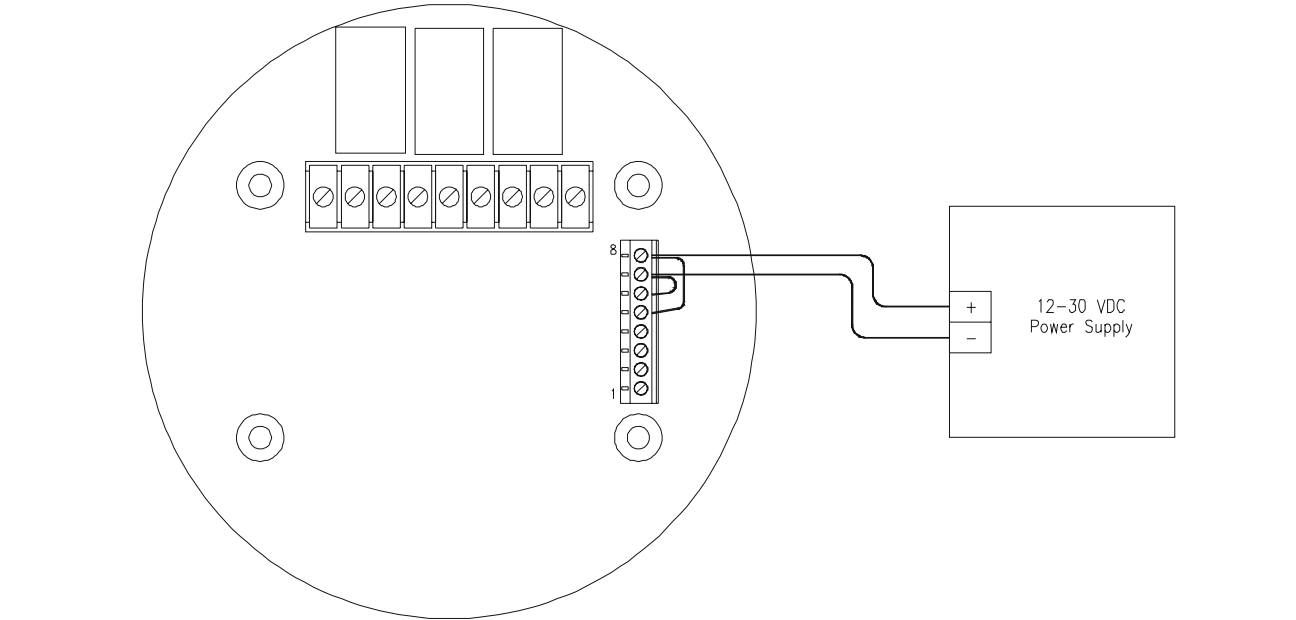
ATI-0528

SEPARATE POWER & ANALOG LOOP SUPPLIES



ATI-0529

POWER OPERATION w/o ANALOG OUTPUT



ATI-0530