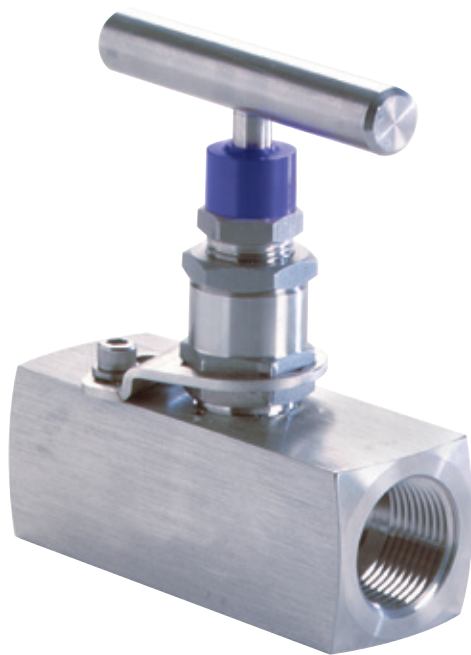




ANDERSON GREENWOOD SERIES HM25D HAND VALVES

A globe pattern valve with a $\frac{7}{16}$ " (11 mm) bore for pressures to 10000 psig (689 barg)



FEATURES

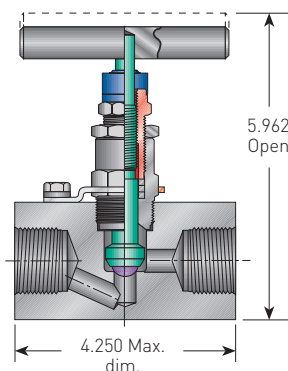
- Rotating ball stem tip provides bubble-tight shutoff and ensures long valve life.
- Large handle ensures ease of operation.
- All valves are hydrostatically tested prior to shipment. Material traceability on all wetted parts is standard.
- PTFE or graphite packing is easily adjustable in the field.
- All packing is below the threads to eliminate contamination by the process, ensure smooth valve operation and long service life.
- Safety back seating prevents accidental stem blowout and removal under pressure.
- Standard bonnet lock plate prevents accidental removal under pressure.
- Wide variety of inlet and outlet configurations and materials.
- Factory configuration to a wide variety of manufacturers' tube fittings.

GENERAL APPLICATION

The HM25D is suitable for severe service, high pressure/temperature applications and features a C_v rating of 1.95, which allows for high flow capacities. Its globe pattern construction allows for throttling of the most severe services.

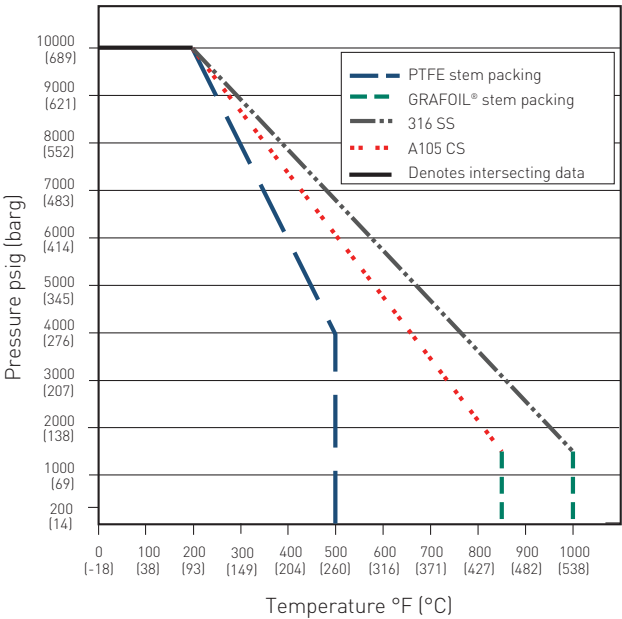
TECHNICAL DATA

Materials:	CS, SS
Seat:	Metal
Connections	
Inlet:	$\frac{3}{4}$ " to 1" NPT or socket weld
Outlet:	$\frac{3}{4}$ " to 1" NPT or $\frac{1}{2}$ " to 1" socket weld
Pressure (max.):	10000 psig (689 barg)
Temperature (max.):	1000°F (538°C)



ANDERSON GREENWOOD SERIES HM25D HAND VALVES

PRESSURE VS TEMPERATURE RATINGS



BONNET ASSEMBLY

The metal-seated bonnet assembly has a strengthened rotating stem with a non-rotating ball stem tip for long service life. The stem threads are machined and lubricated to prevent galling and reduce operating torque. It incorporates adjustable Grafoil packing and back-up pressure rings to ensure a leak-free stem seal as standard, with PTFE packing as an option. The specially hardened ball seat is ideal for both gas and liquid service. A protective dust cap is fitted to contain stem lubricant and prevent the influx of contaminants. All bonnets are assembled with a bonnet lock plate to prevent accidental removal while in service.

SELECTION GUIDE

Example:	HM25D	S	8	PID	H	SG
Materials of construction						
S	SS - 316/316L (meets NACE MR0175 latest revision with needle stem end)					
C	CS - carbon steel (A108CS)					
(Other construction materials available - consult factory)						
Inlet/outlet connections						
Standard threaded connections			Standard socketweld (pipe)			
6	¾" FNPT x ¾" FNPT		MS66S	¾" MSW x ¾" FSW		
66	¾" MNPT x ¾" FNPT		MS64S	¾" MSW x ½" FSW		
8	1" FNPT x 1" FNPT		FS66S	1" FSW x 1" FSW		
88	1" MNPT x 1" MNPT		MS88S	1" MSW x 1" FSW		
Stem tip						
PID	Rotating ball tip stem end					
Packing						
V	PTFE					
H	Grafoil®					
Special options						
SG	Sour Gas meets the requirements of NACE MR0175 latest revision					
OC00	Cleaned for oxygen service					
TF	Installed tube fittings					

NOTE

All seats on HM25D Series are integral - no nomenclature designation required.